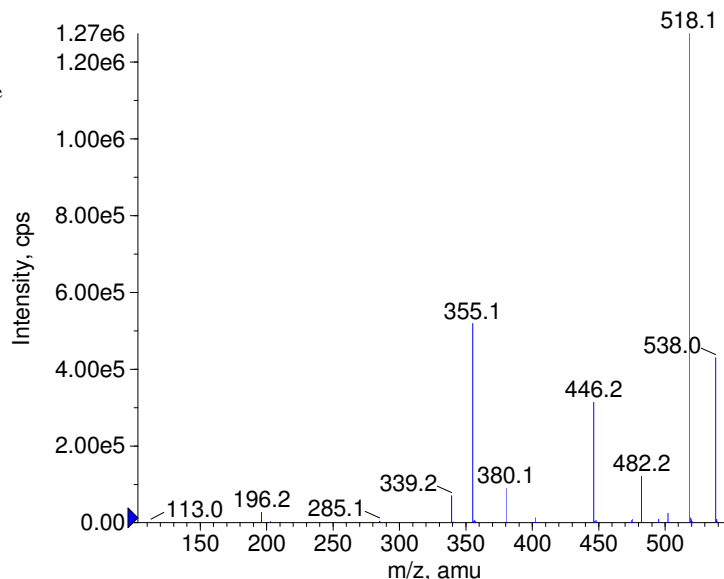
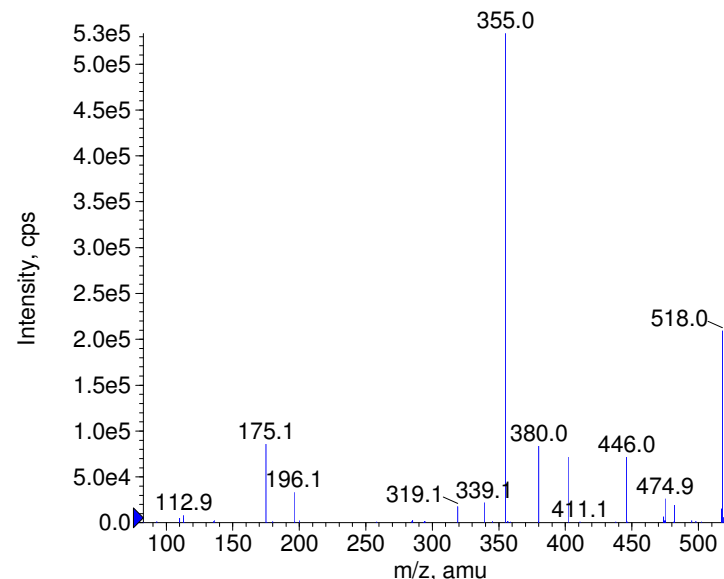


Compound Name: Chlorfluazuron
 Synonyms:
 Formula: C₂₀H₉Cl₃F₅N₃O₃
 CAS Number: 71422-67-8
 Molecular weight(amu): 538.9629
 Compound Class: plant growth regulator, insecticide
 Compound ID: C322b
 User Value: 0.0000
 Keyword:
 Internal Standard: No
 Comment1:

■ - Chlorfluazuron Prec(538.0) CE(-20.0) RT(3.6)

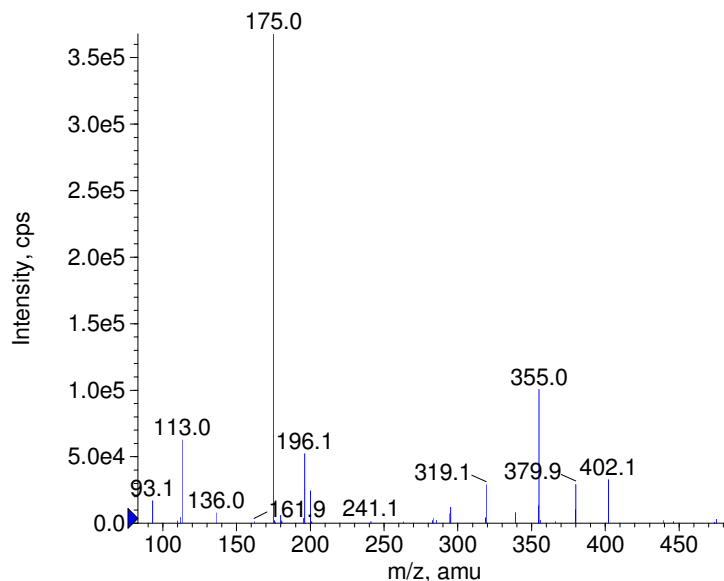


■ - Chlorfluazuron Prec(538.0) CE(-35.0) RT(3.7)

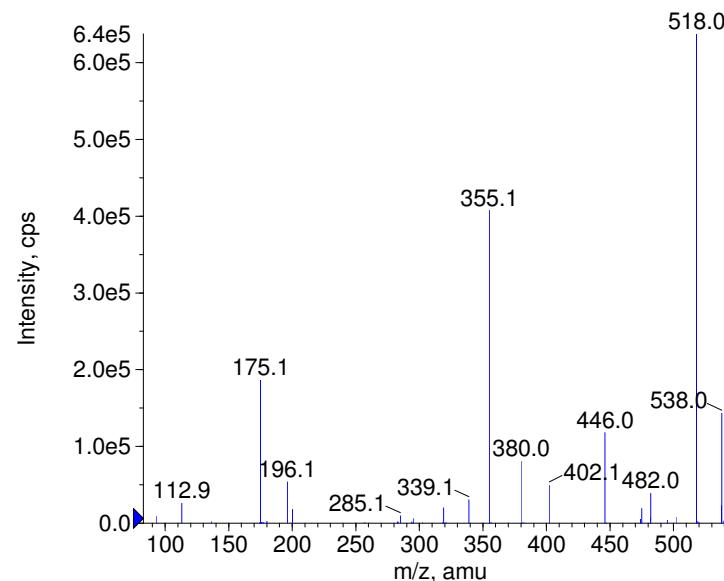


Instrument Model: QTrap
 Ion Source: Turbo Spray
 Polarity: Negative
 Scan Type: EPI
 1st Precursor m/z: 538.0000
 Collision Energy1(V): -20.0000
 Charge State1: -1
 CAD Gas Type:
 CAD Gas Value: Level 4
 Retention Time(min): 3.65
 Resolution: unit
 Comment2:
 Comment3:

■ - Chlorfluazuron Prec(538.0) CE(-50.0) RT(3.7)



■ - Chlorfluazuron Prec(538.0) CE(-99.0) RT(3.7)

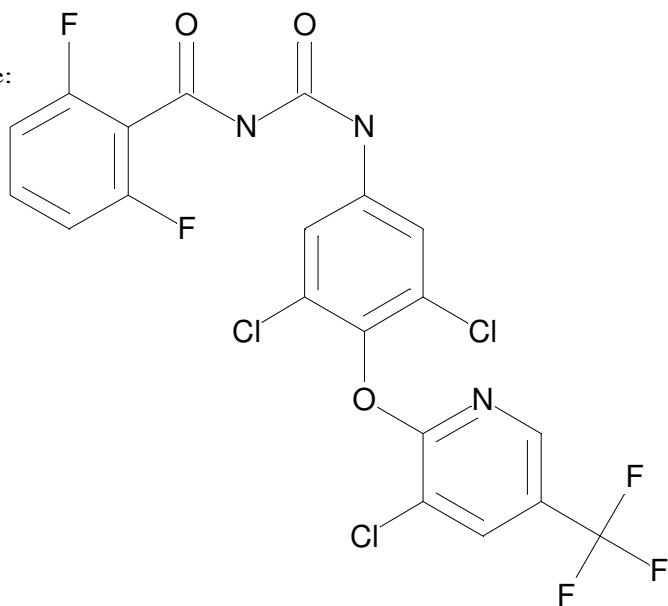


© Copyright 2007 by
 W. Weinmann
 S. Dresen
www.chemicalsoft.de

“CE (99.0)”: CE spread 35+/-15 eV

C20H9N3O3F5Cl3

Chemist Name:
Project Name:
Workbook Name:
Workbook Page:



© Copyright 2007 by
W. Weinmann
S. Dresen
www.chemicalsoft.de

“CE (99.0)“: CE spread 35+/-15 eV