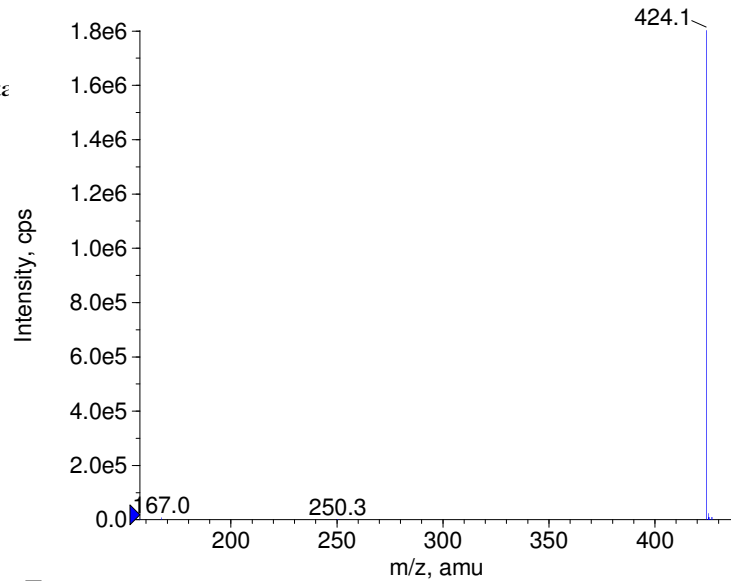
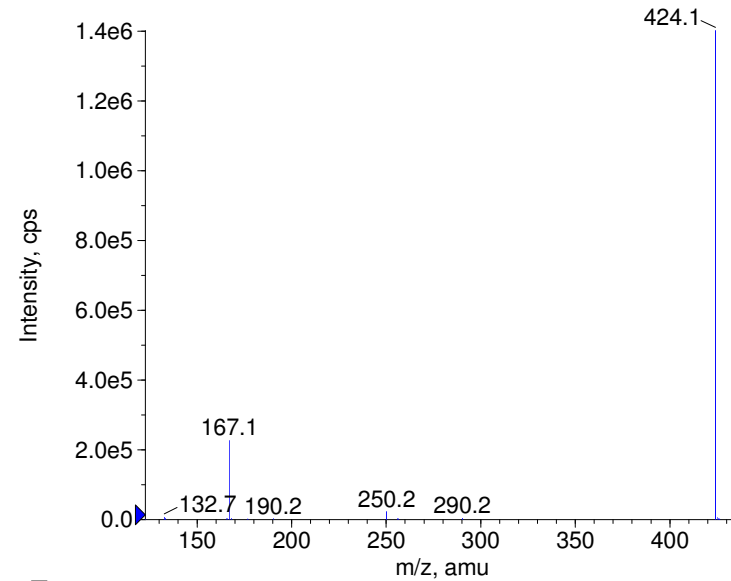


Compound Name: Domperidone
 Synonyms:
 Formula: C₂₂H₂₄ClN₅O₂
 CAS Number: 57808-66-9
 Molecular weight(amu): 425.1618
 Compound Class: antiemetic, dopamine receptor anta
 Compound ID: D074
 User Value: 0.0000
 Keyword:
 Internal Standard: No
 Comment1:

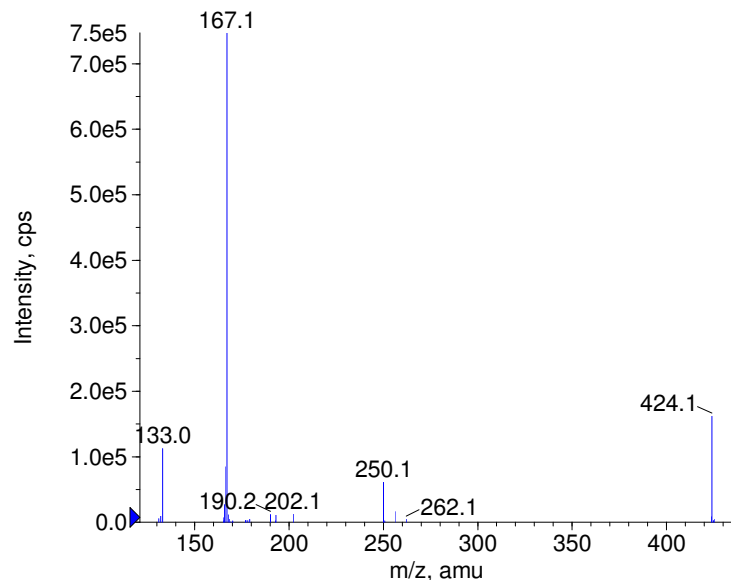
■ - Domperidone Prec(424.0) CE(-20.0) RT(0.9)



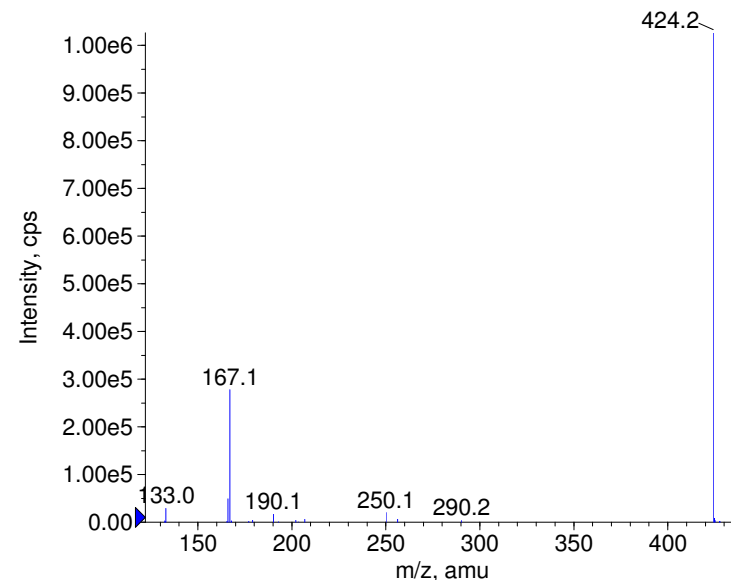
■ - Domperidone Prec(424.0) CE(-35.0) RT(0.9)



■ - Domperidone Prec(424.0) CE(-50.0) RT(0.9)



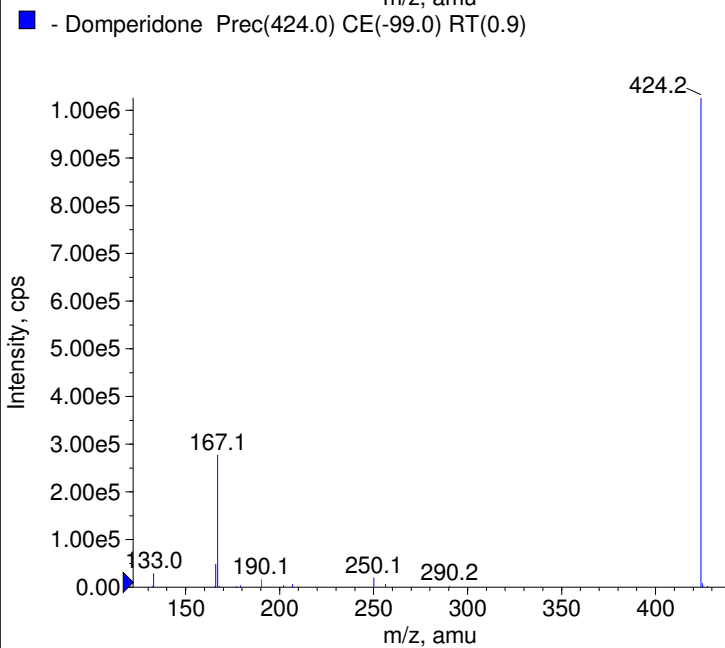
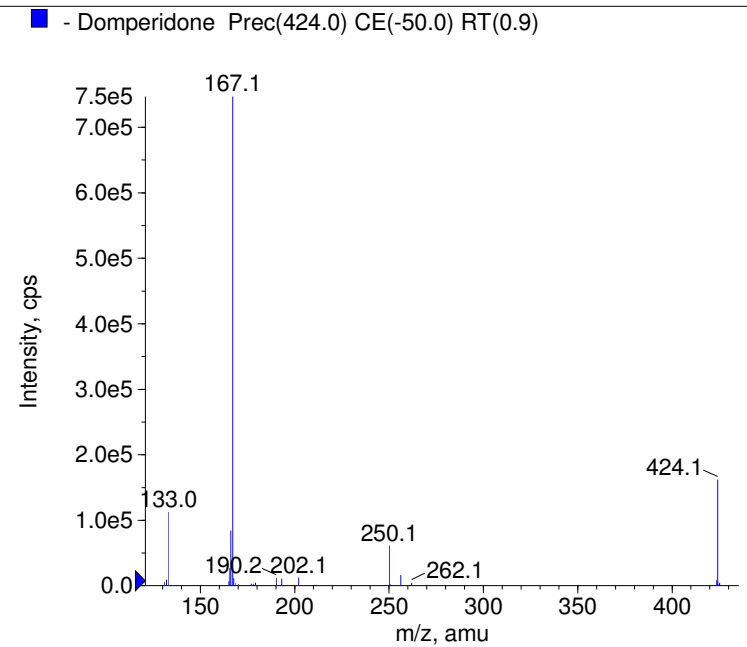
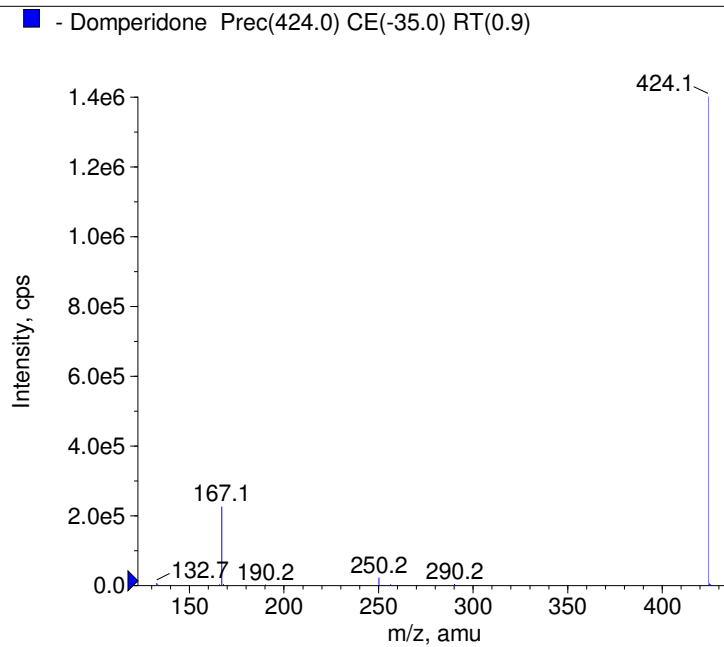
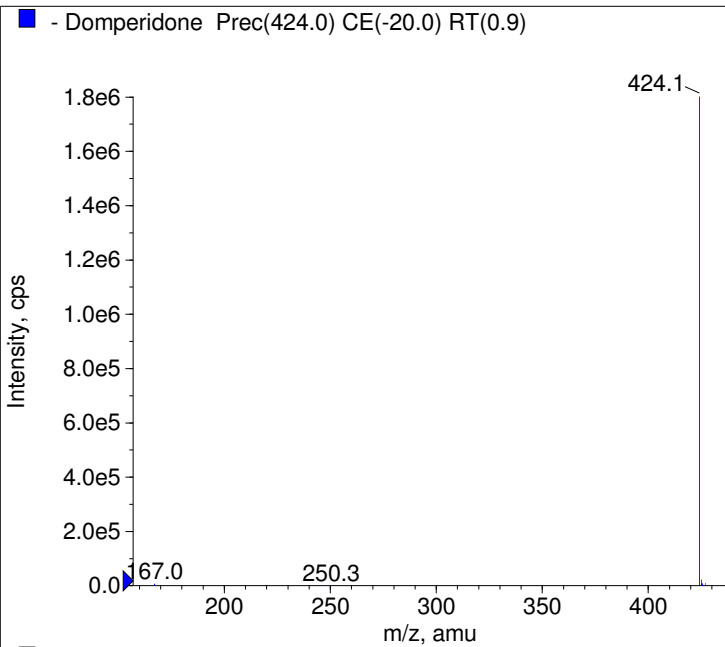
■ - Domperidone Prec(424.0) CE(-99.0) RT(0.9)



Instrument Model: QTrap
 Ion Source: Turbo Spray
 Polarity: Negative
 Scan Type: EPI
 1st Precursor m/z: 424.0000
 Collision Energy1(V): -20.0000
 Charge State1: -1
 CAD Gas Type:
 CAD Gas Value: Level 4
 Retention Time(min): 0.89
 Resolution: unit
 Comment2:
 Comment3:

© Copyright 2007 by
 W. Weinmann
 S. Dresen
www.chemicalsoft.de

“CE (99.0)”: CE spread 35+/-15 eV



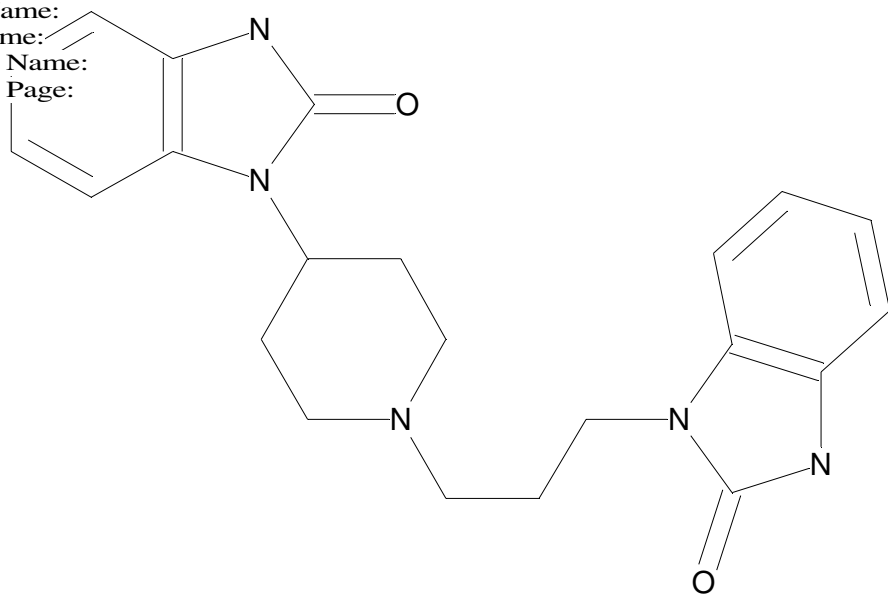
C22H24N5O2Cl

Chemist Name:

Project Name:

Workbook Name:

Workbook Page:



© Copyright 2007 by
W. Weinmann
S. Dresen

www.chemicalsoft.de

“CE (99.0)“: CE spread 35+/-15 eV