

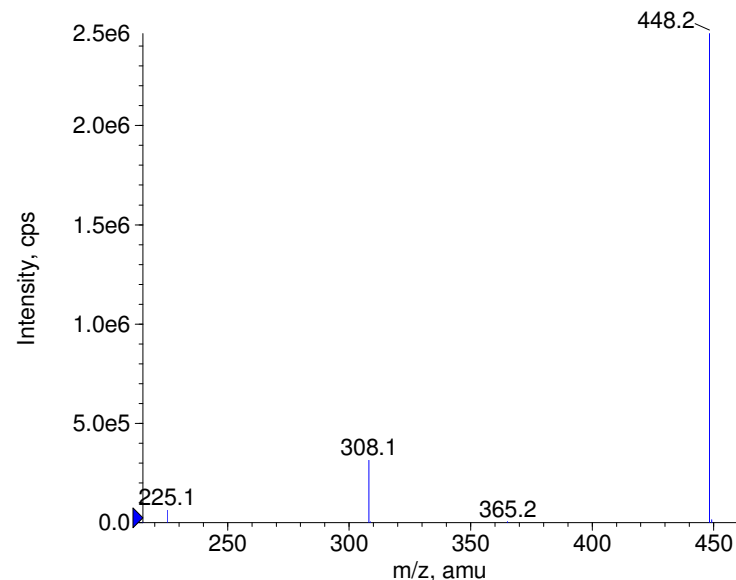
Compound Name: Glisoxepide
Synonyms:
Formula: C20H27N5O5S
CAS Number: 25046-79-1
Molecular weight(amu):449.1732
Compound Class: antidiabetic
Compound ID: G030
User Value: 0.0000
Keyword:
Internal Standard: No
Comment1:

Instrument Model: QTrap
Ion Source: Turbo Spray
Polarity: Negative
Scan Type: EPI
1st Precursor m/z: 448.0000
Collision Energy1(V): -20.0000
Charge State1: -1
CAD Gas Type:
CAD Gas Value: Level 4
Retention Time(min): 0.90
Resolution: unit
Comment2:
Comment3:

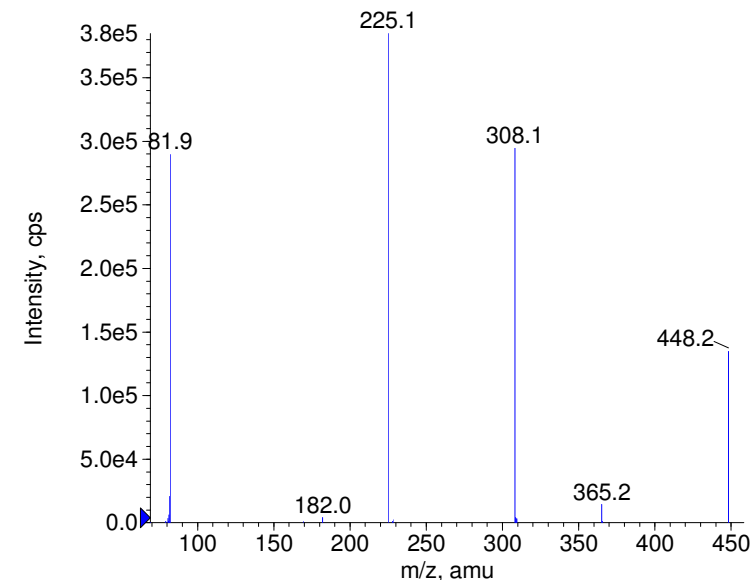
© Copyright 2007 by
W. Weinmann
S. Dresen
www.chemicalsoft.de

“CE (99.0)”: CE spread 35+/-15 eV

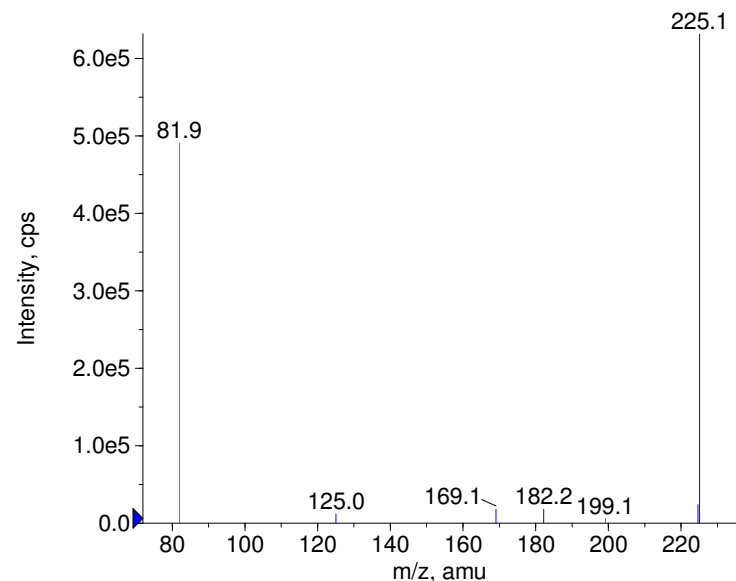
■ - Glisoxepide Prec(448.0) CE(-20.0) RT(0.9)



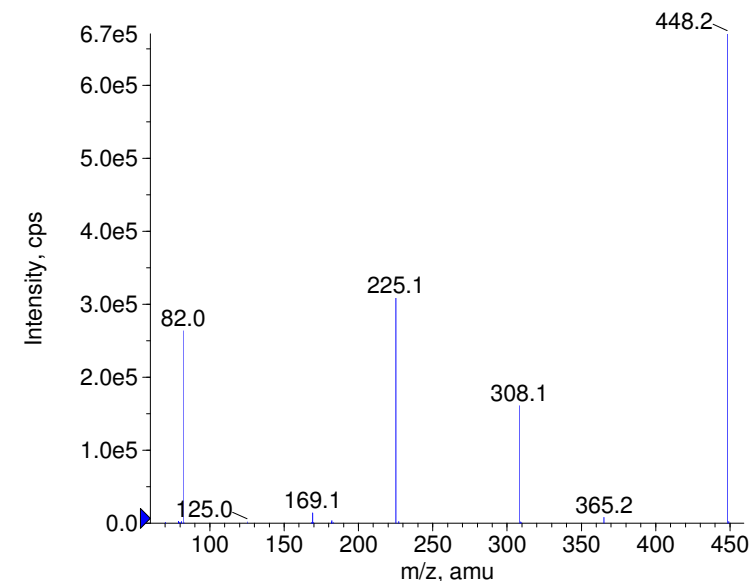
■ - Glisoxepide Prec(448.0) CE(-35.0) RT(0.9)

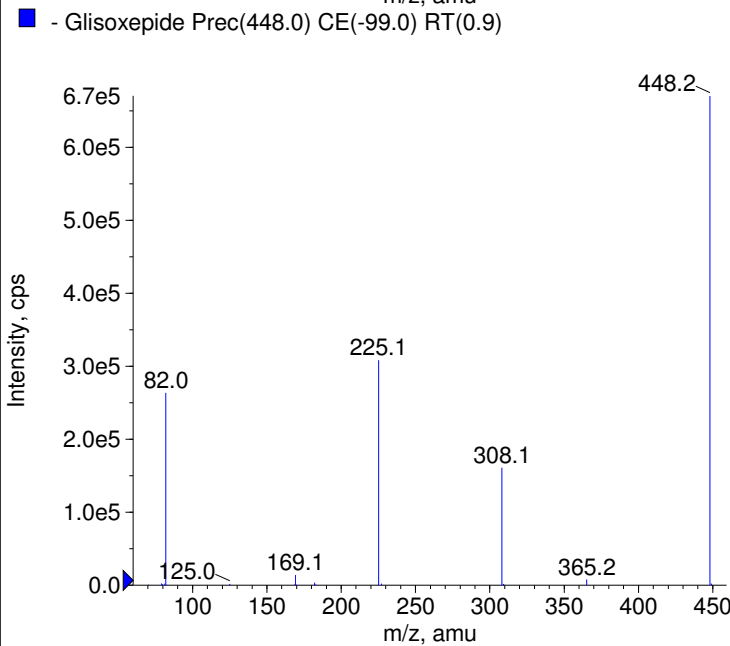
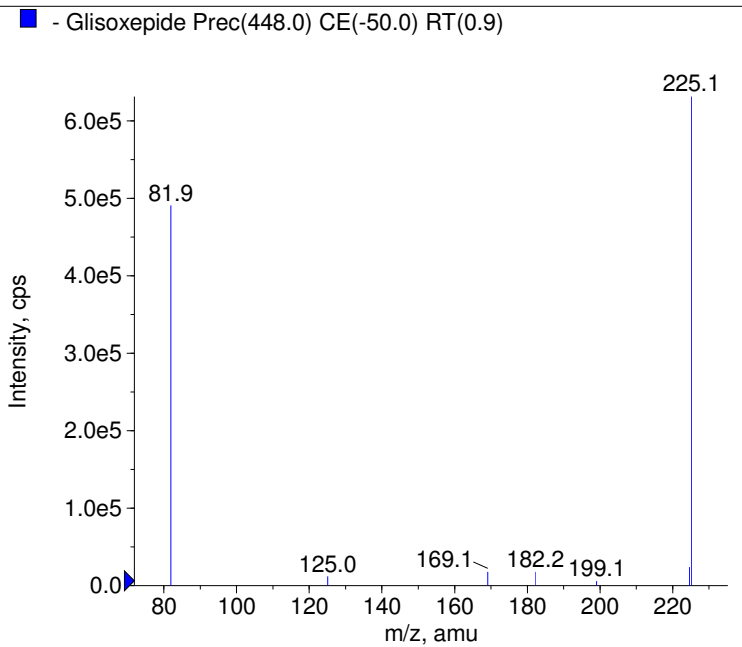
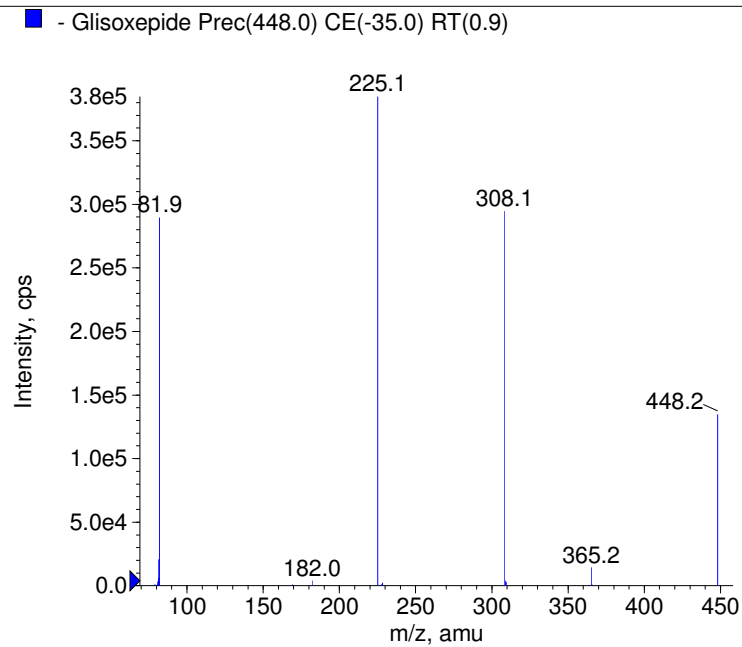
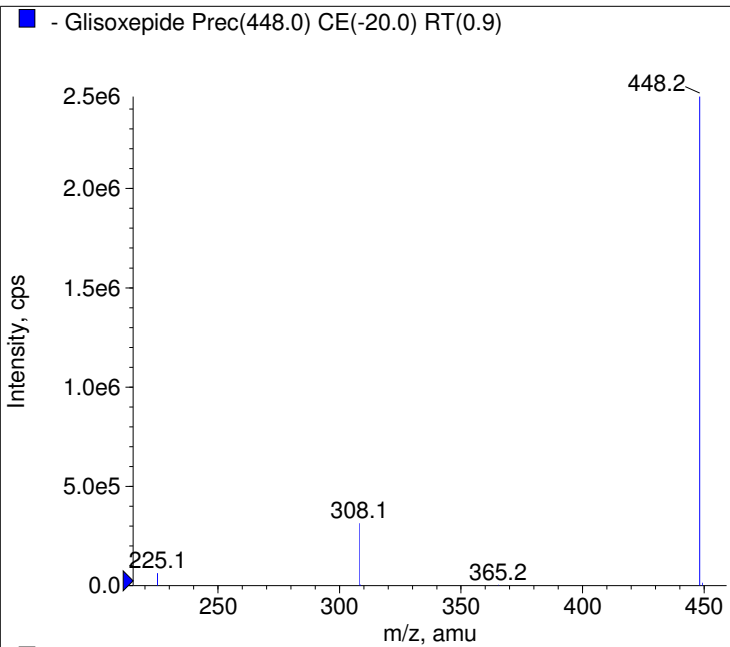


■ - Glisoxepide Prec(448.0) CE(-50.0) RT(0.9)



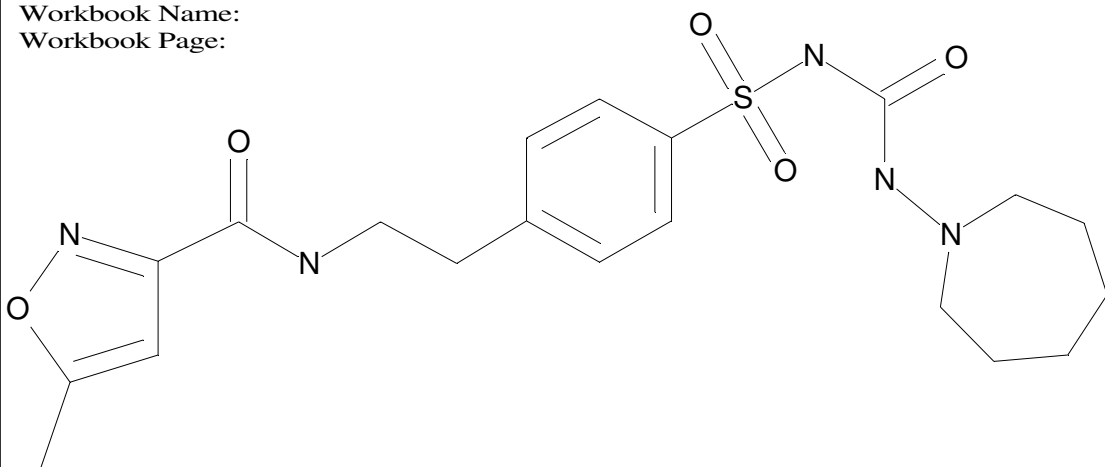
■ - Glisoxepide Prec(448.0) CE(-99.0) RT(0.9)





C20H27N5O5S

Chemist Name:
Project Name:
Workbook Name:
Workbook Page:



© Copyright 2007 by
W. Weinmann
S. Dresen
www.chemicalsoft.de

“CE (99.0)“: CE spread 35+/-15 eV