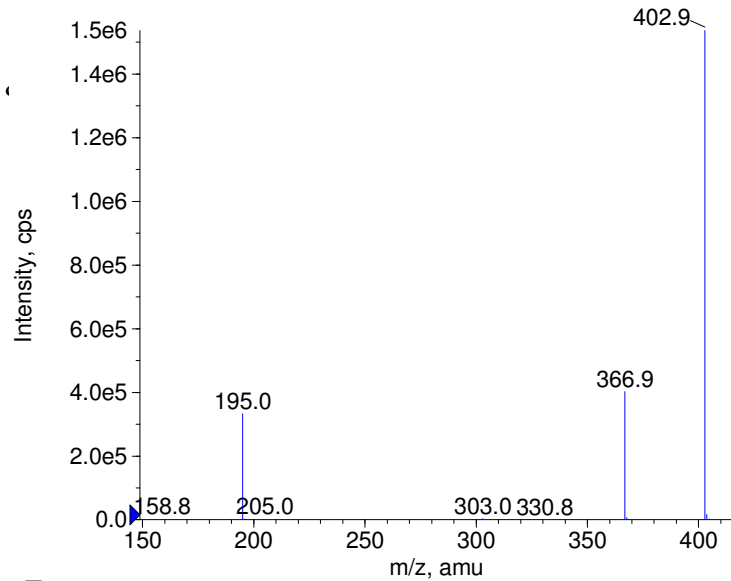
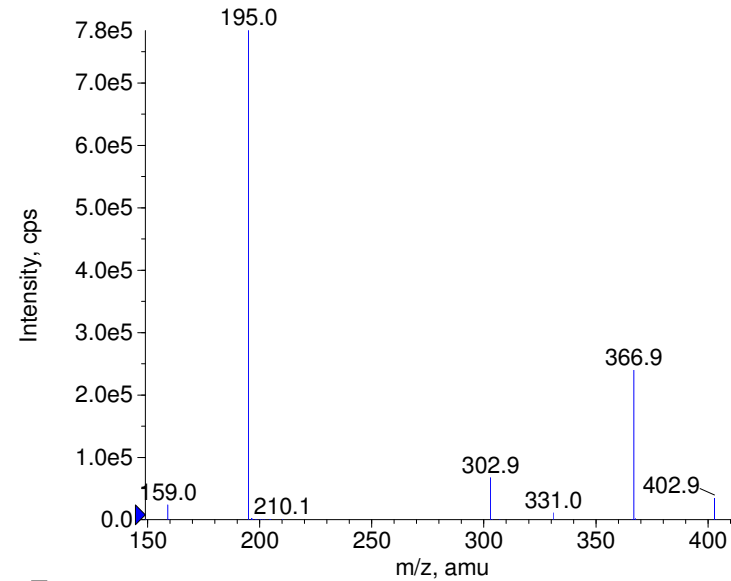


Compound Name: Hexachlorophene
 Synonyms:
 Formula: C₁₃H₆Cl₁₆O₂
 CAS Number: 70-30-4
 Molecular weight(amu): 403.8498
 Compound Class: anti-infective (topical), fungicide, (

■ - Hexachlorophene Prec(403.0) CE(-20.0) RT(7.5)

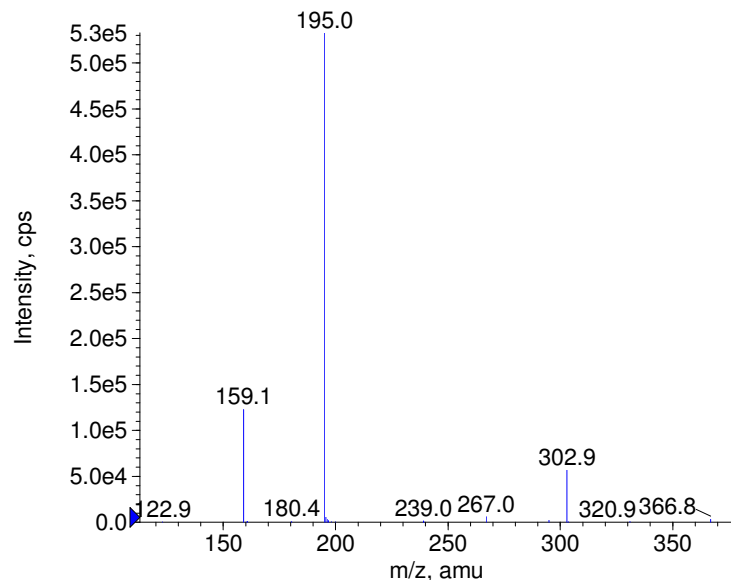


■ - Hexachlorophene Prec(403.0) CE(-35.0) RT(7.5)

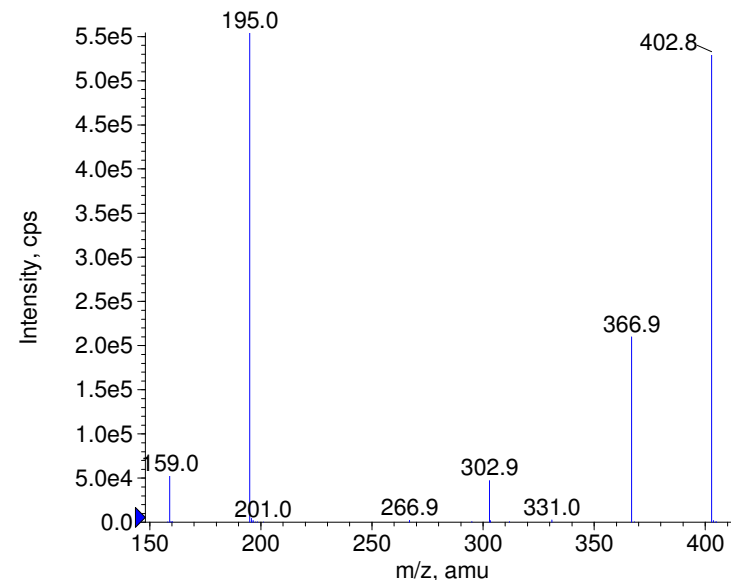


Instrument Model: QTrap
 Ion Source: Turbo Spray
 Polarity: Negative
 Scan Type: EPI
 1st Precursor m/z: 403.0000
 Collision Energy1(V): -20.0000
 Charge State1: -1
 CAD Gas Type:
 CAD Gas Value: Level 4
 Retention Time(min): 7.53
 Resolution: unit
 Comment2:
 Comment3:

■ - Hexachlorophene Prec(403.0) CE(-50.0) RT(7.6)



■ - Hexachlorophene Prec(403.0) CE(-99.0) RT(7.6)

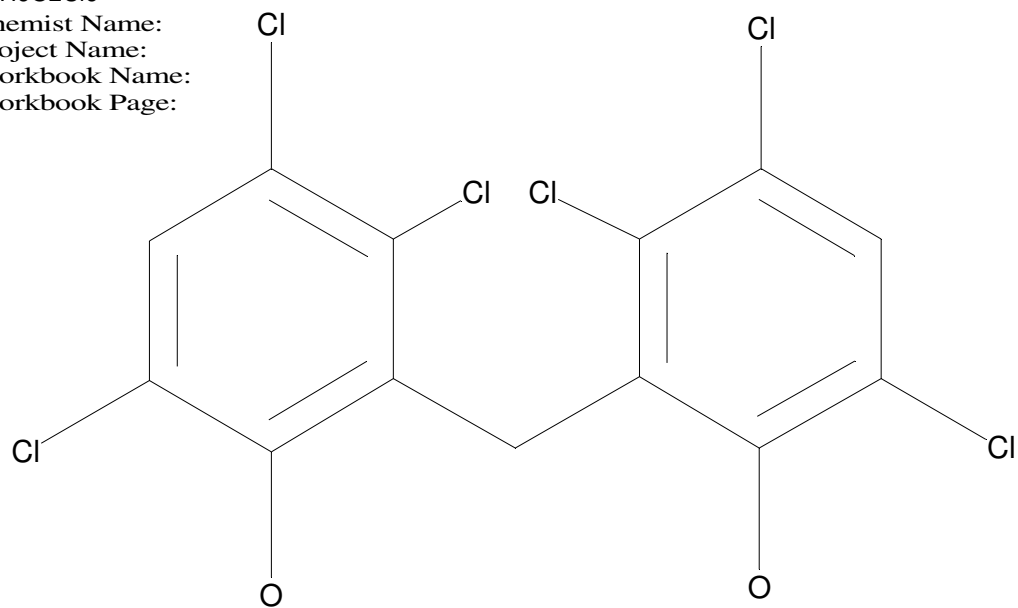


© Copyright 2007 by
 W. Weinmann
 S. Dresen
www.chemicalsoft.de

“CE (99.0)”: CE spread 35+/-15 eV

C13H6O2Cl6

Chemist Name:
Project Name:
Workbook Name:
Workbook Page:



© Copyright 2007 by
W. Weinmann
S. Dresen
www.chemicalsoft.de

“CE (99.0)“: CE spread 35+/-15 eV