

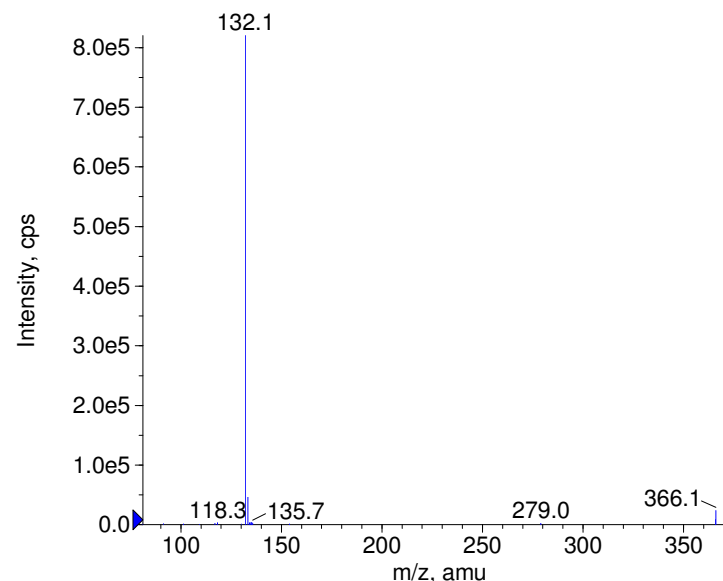
Compound Name: Indapamine  
Synonyms:  
Formula: C<sub>16</sub>H<sub>16</sub>CIN<sub>3</sub>O<sub>3</sub>S  
CAS Number: 26807-65-8  
Molecular weight(amu): 365.0600  
Compound Class: diuretic, antihypertensive  
Compound ID: I014  
User Value: 0.0000  
Keyword:  
Internal Standard: No  
Comment1:

Instrument Model: QTrap  
Ion Source: Turbo Spray  
Polarity: Positive  
Scan Type: EPI  
1st Precursor m/z: 366.0000  
Collision Energy1(V): 20.0000  
Charge State1: 1  
CAD Gas Type:  
CAD Gas Value: Level 4  
Retention Time(min): 0.88  
Resolution: unit  
Comment2:  
Comment3:

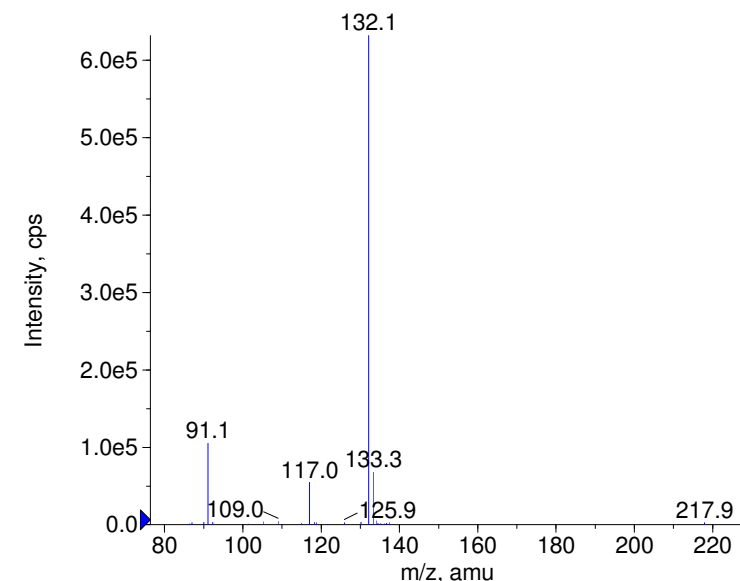
© Copyright 2007 by  
W. Weinmann  
S. Dresen  
[www.chemicalsoft.de](http://www.chemicalsoft.de)

“CE (99.0)“: CE spread 35+/-15 eV

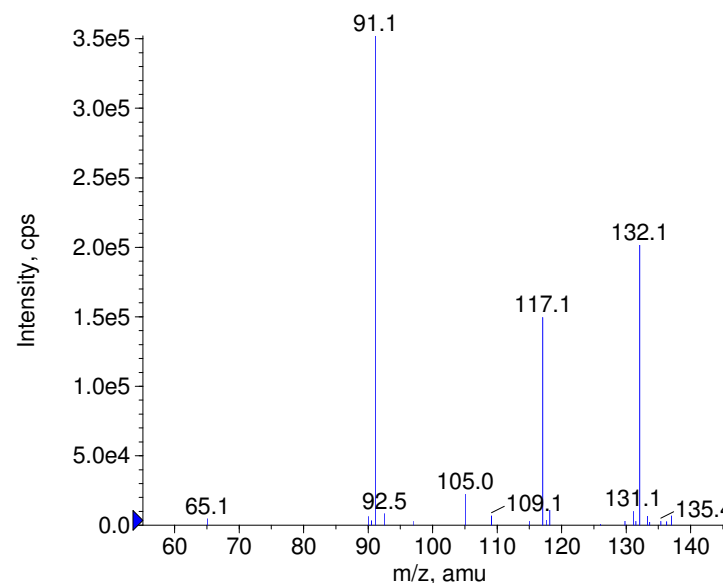
+ Indapamine Prec(366.0) CE(20.0) RT(0.9)



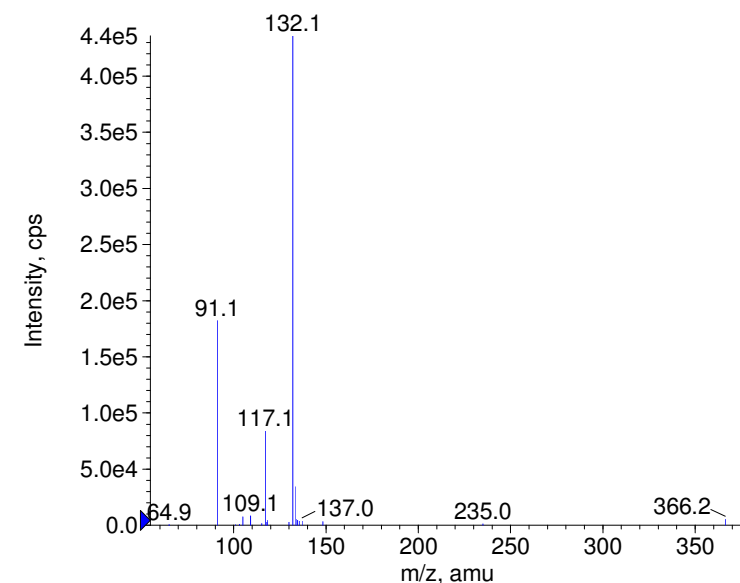
+ Indapamine Prec(366.0) CE(35.0) RT(0.9)



+ Indapamine Prec(366.0) CE(50.0) RT(0.9)

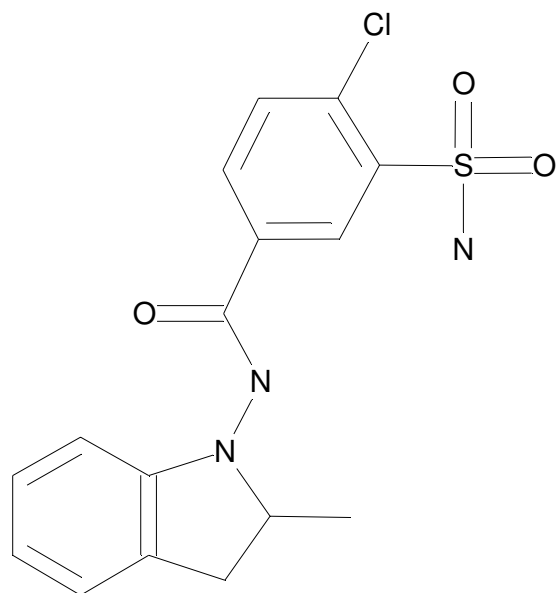


+ Indapamine Prec(366.0) CE(99.0) RT(0.9)



C16H16N3O3SCl

Chemist Name:  
Project Name:  
Workbook Name:  
Workbook Page:



© Copyright 2007 by  
W. Weinmann  
S. Dresen  
[www.chemicalsoft.de](http://www.chemicalsoft.de)

“CE (99.0)“: CE spread 35+/-15 eV