

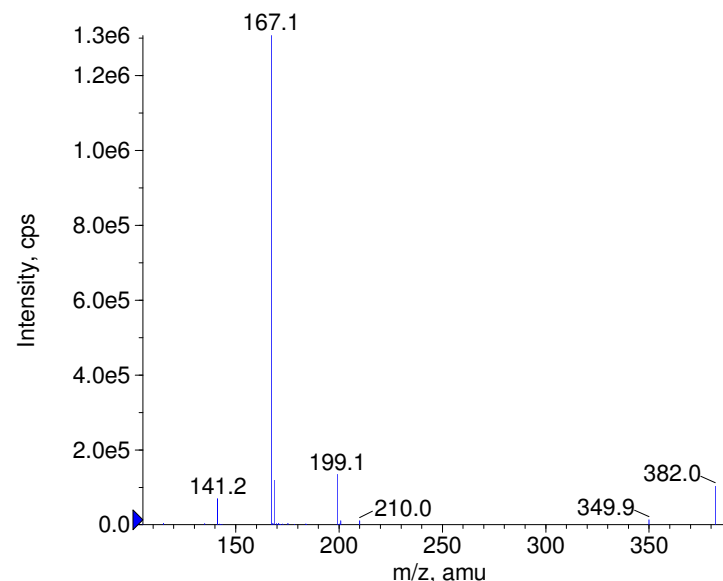
Compound Name: Metsulfuron-methyl  
Synonyms:  
Formula: C14H15N5O6S  
CAS Number: 74223-64-6  
Molecular weight(amu): 381.0743  
Compound Class: herbicide  
Compound ID: M150  
User Value: 0.0000  
Keyword:  
Internal Standard: No  
Comment1:

Instrument Model: QTrap  
Ion Source: Turbo Spray  
Polarity: Positive  
Scan Type: EPI  
1st Precursor m/z: 382.0000  
Collision Energy1(V): 20.0000  
Charge State1: 1  
CAD Gas Type:  
CAD Gas Value: Level 4  
Retention Time(min): 0.84  
Resolution: unit  
Comment2:  
Comment3:

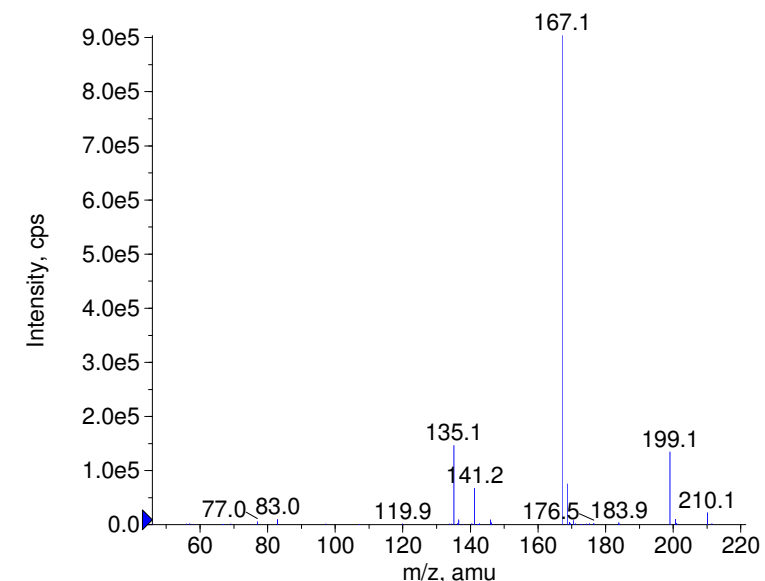
© Copyright 2007 by  
W. Weinmann  
S. Dresen  
[www.chemicalsoft.de](http://www.chemicalsoft.de)

“CE (99.0)“: CE spread 35+/-15 eV

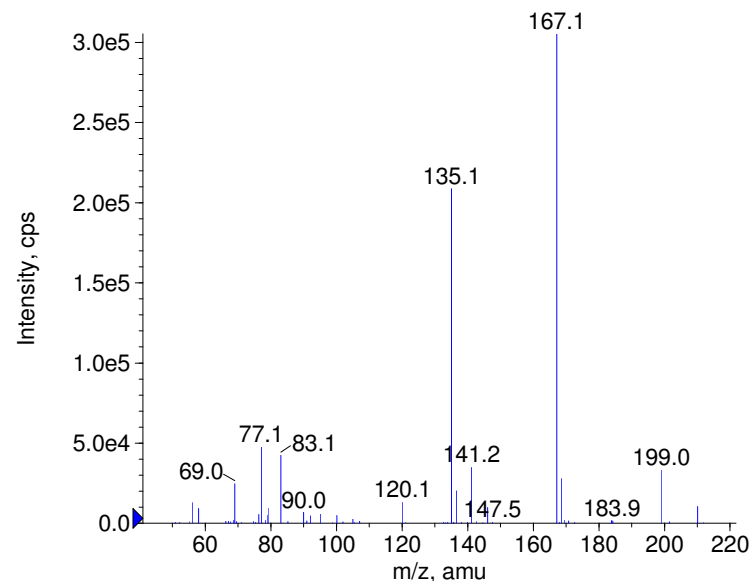
+ Metsulfuron-methyl Prec(382.0) CE(20.0) RT(0.8)



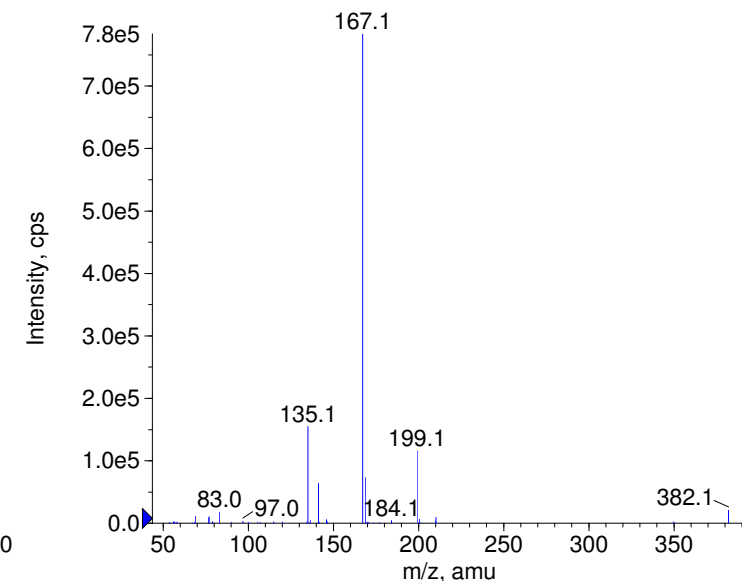
+ Metsulfuron-methyl Prec(382.0) CE(35.0) RT(0.9)

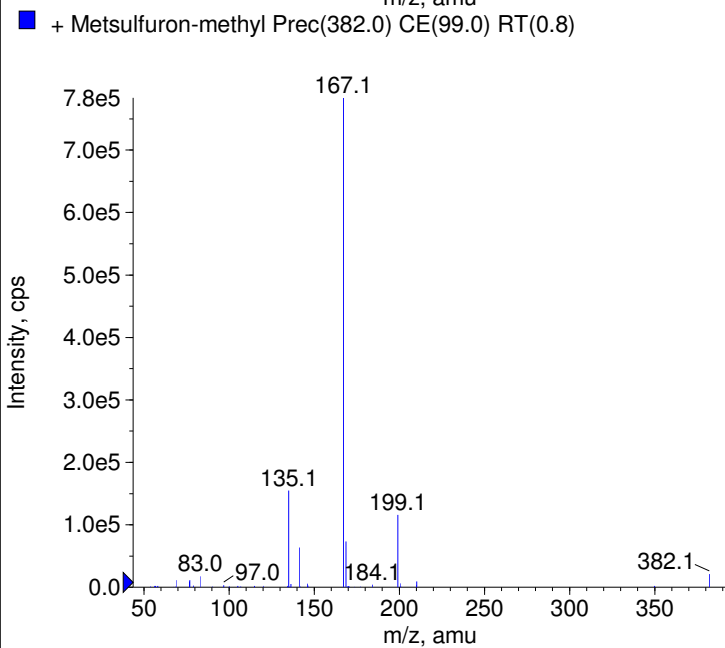
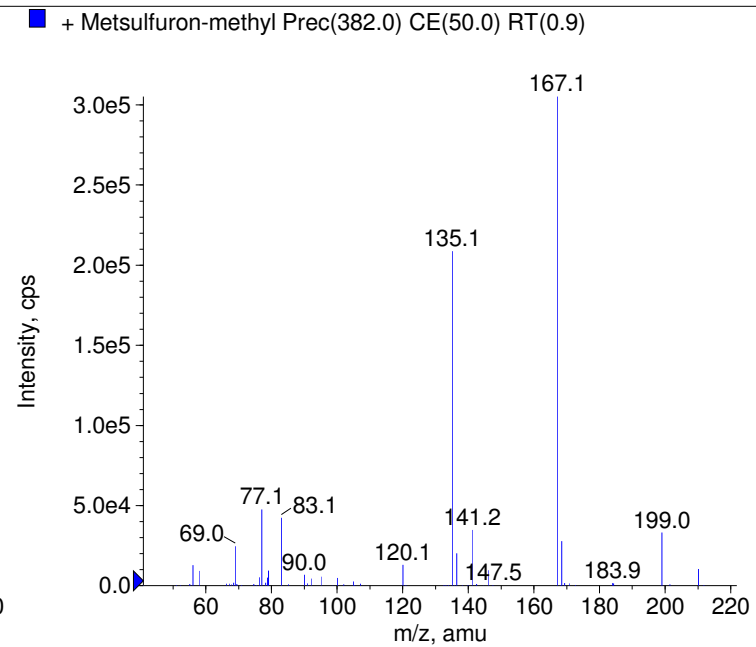
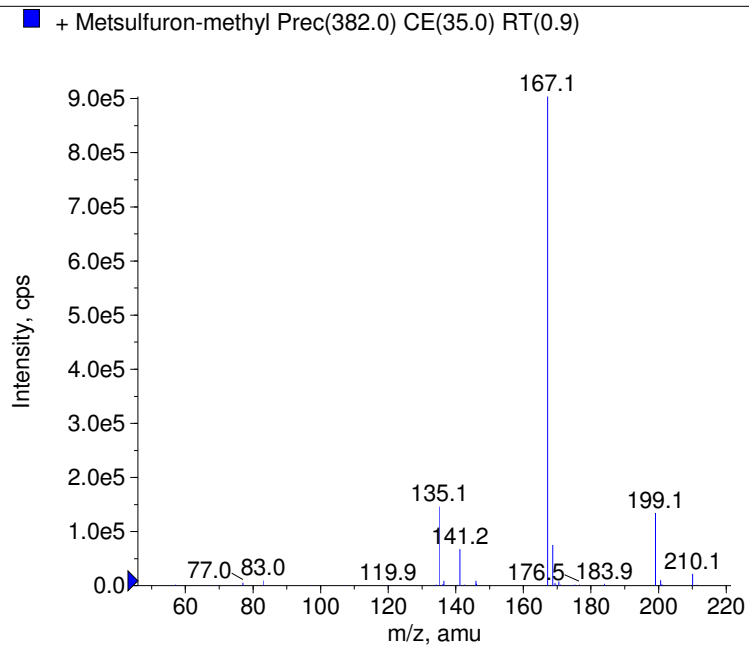
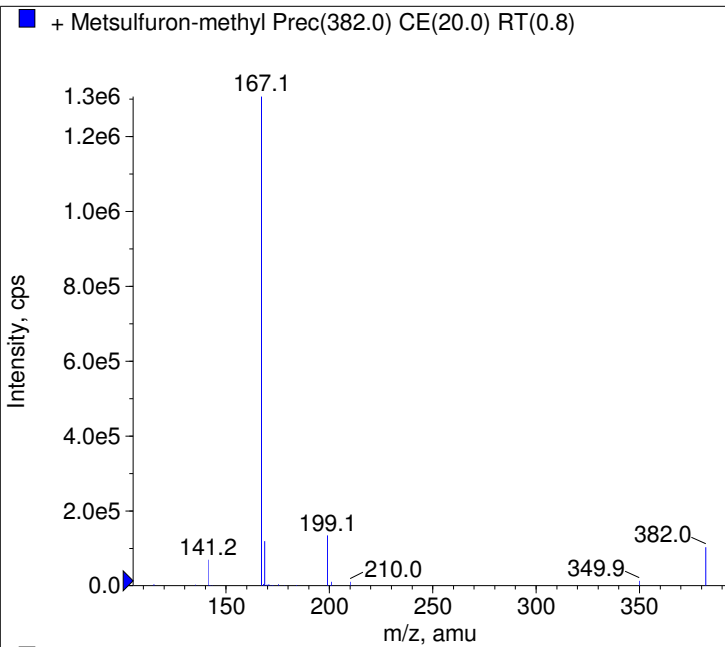


+ Metsulfuron-methyl Prec(382.0) CE(50.0) RT(0.9)



+ Metsulfuron-methyl Prec(382.0) CE(99.0) RT(0.8)





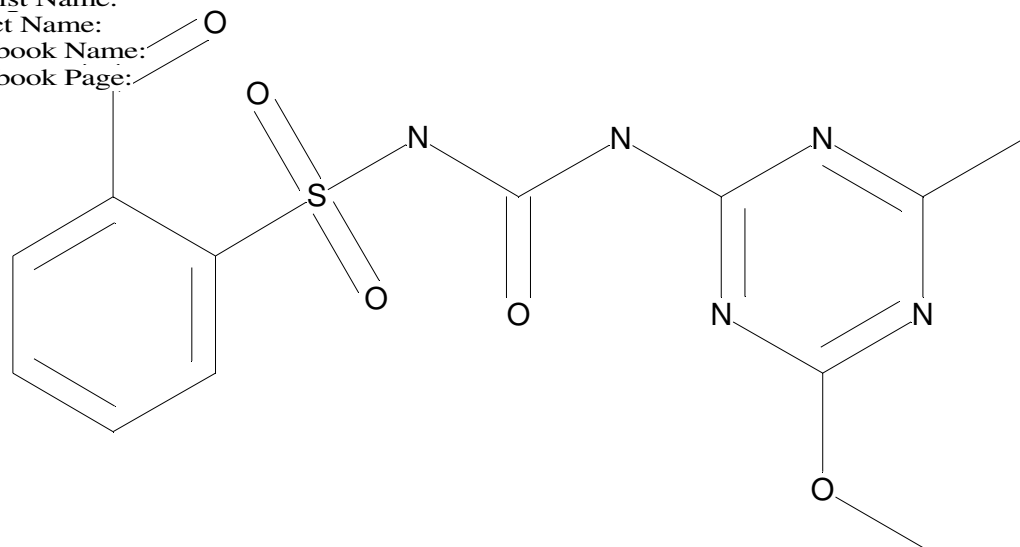
C14H15N5O6S

Chemist Name:

Project Name:

Workbook Name:

Workbook Page:



© Copyright 2007 by  
W. Weinmann  
S. Dresen  
[www.chemicalsoft.de](http://www.chemicalsoft.de)

“CE (99.0)“: CE spread 35+/-15 eV