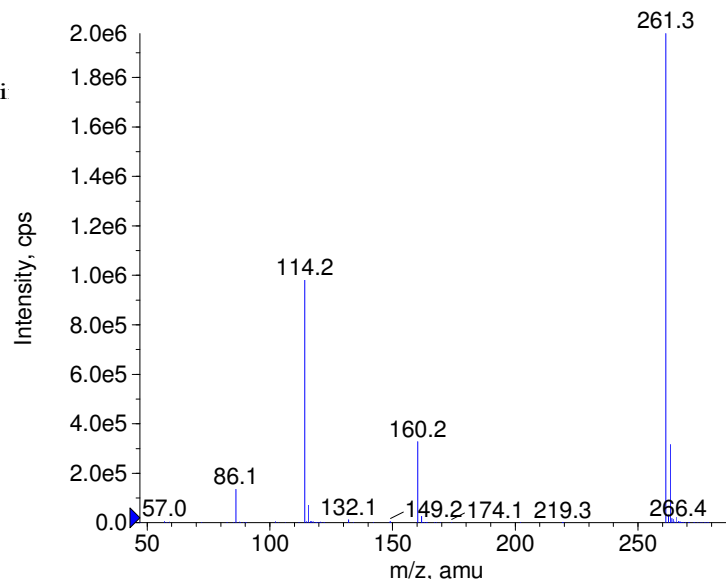
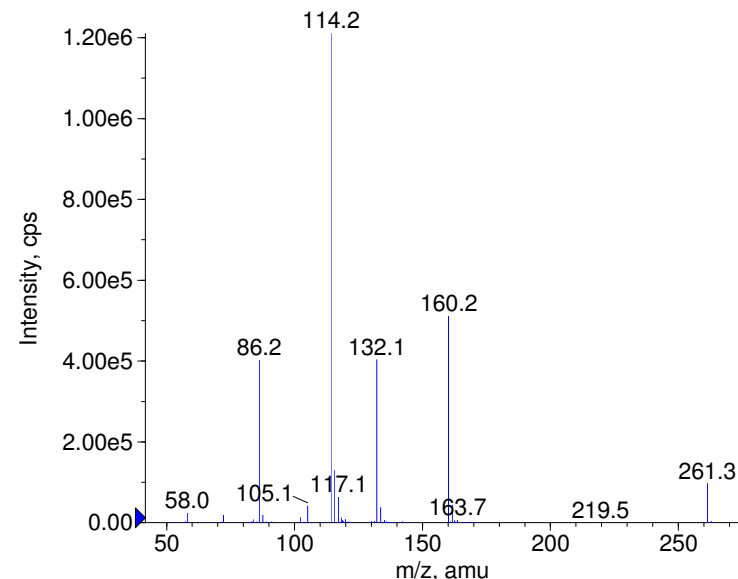


Compound Name: Ropinirole
 Synonyms:
 Formula: C16H24N2O
 CAS Number: 91374-21-9
 Molecular weight(amu): 260.1888
 Compound Class: dopamine D2 antagonist, antiparki
 Compound ID: R028
 User Value: 0.0000
 Keyword:
 Internal Standard: No
 Comment1:

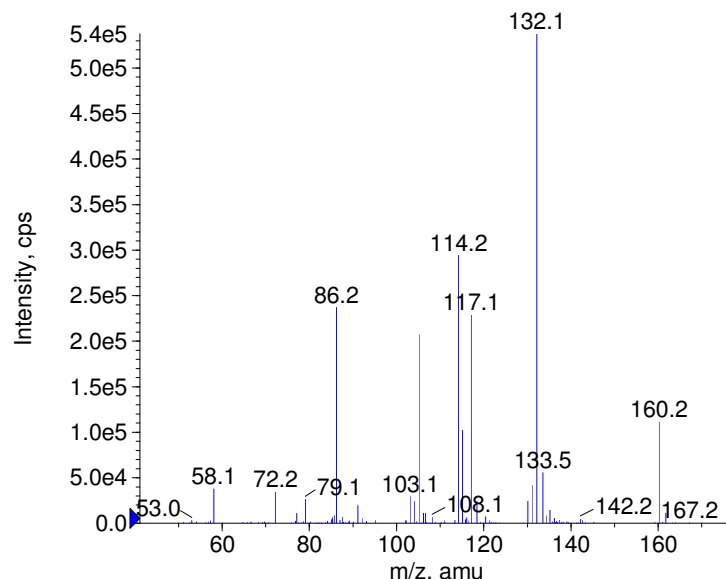
+ Ropinirole Prec(261.0) CE(20.0) RT(0.8)



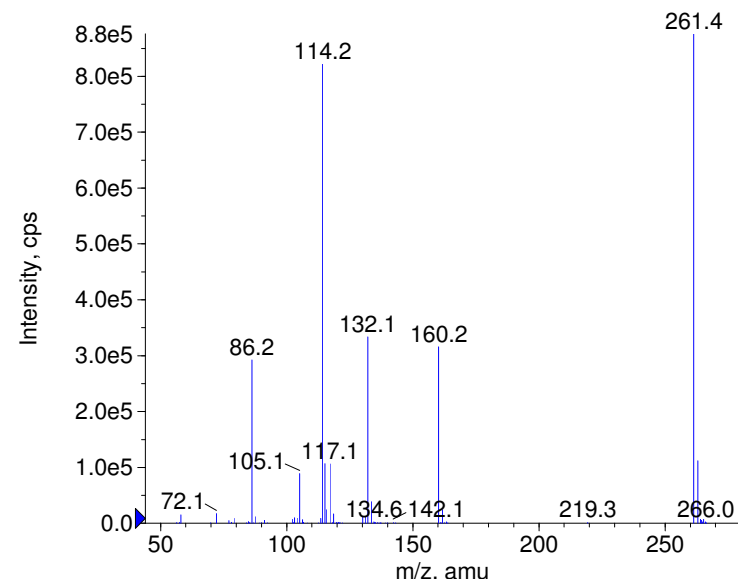
+ Ropinirole Prec(261.0) CE(35.0) RT(0.9)



+ Ropinirole Prec(261.0) CE(50.0) RT(0.9)



+ Ropinirole Prec(261.0) CE(99.0) RT(0.9)



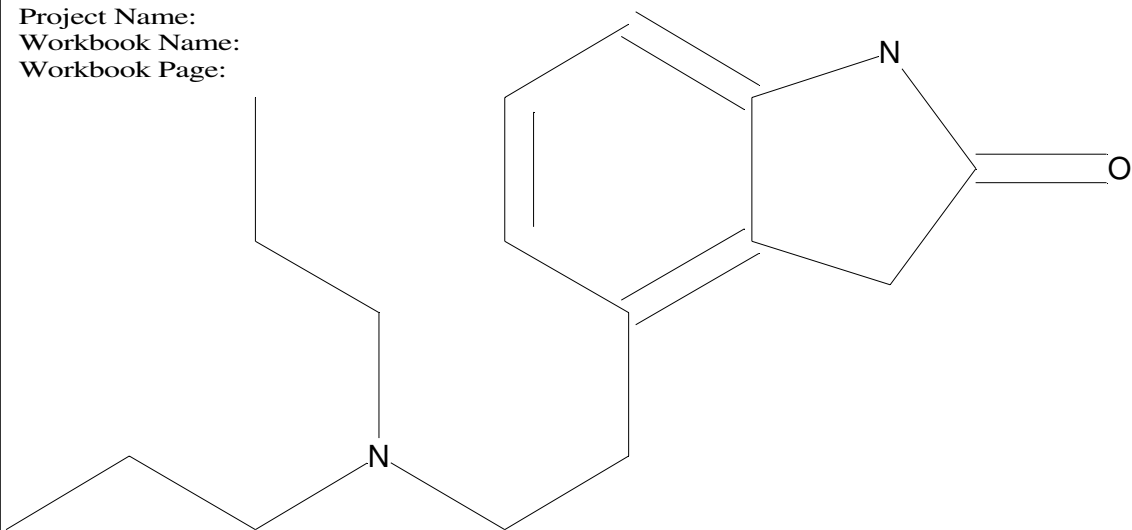
Instrument Model: QTrap
 Ion Source: Turbo Spray
 Polarity: Positive
 Scan Type: EPI
 1st Precursor m/z: 261.0000
 Collision Energy1(V): 20.0000
 Charge State1: 1
 CAD Gas Type:
 CAD Gas Value: Level 4
 Retention Time(min): 0.84
 Resolution: unit
 Comment2:
 Comment3:

© Copyright 2007 by
 W. Weinmann
 S. Dresen
www.chemicalsoft.de

“CE (99.0)”: CE spread 35+/-15 eV

C16H24N2O

Chemist Name:
Project Name:
Workbook Name:
Workbook Page:



© Copyright 2007 by
W. Weinmann
S. Dresen
www.chemicalsoft.de

“CE (99.0)“: CE spread 35+/-15 eV