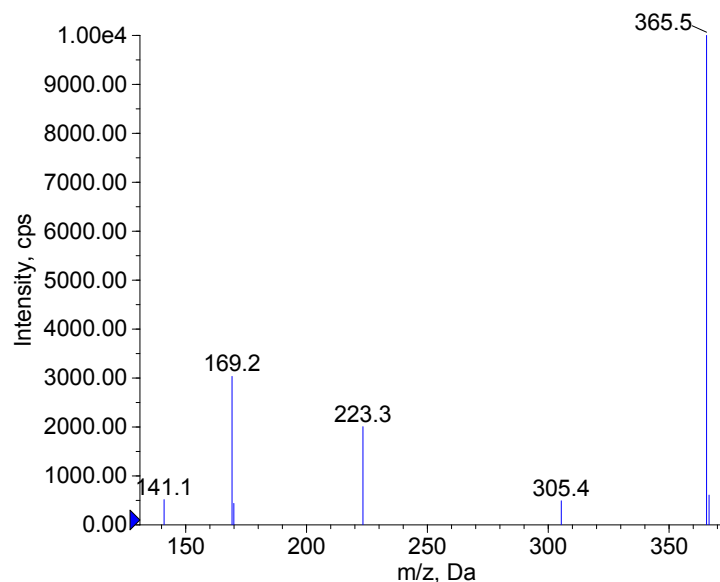
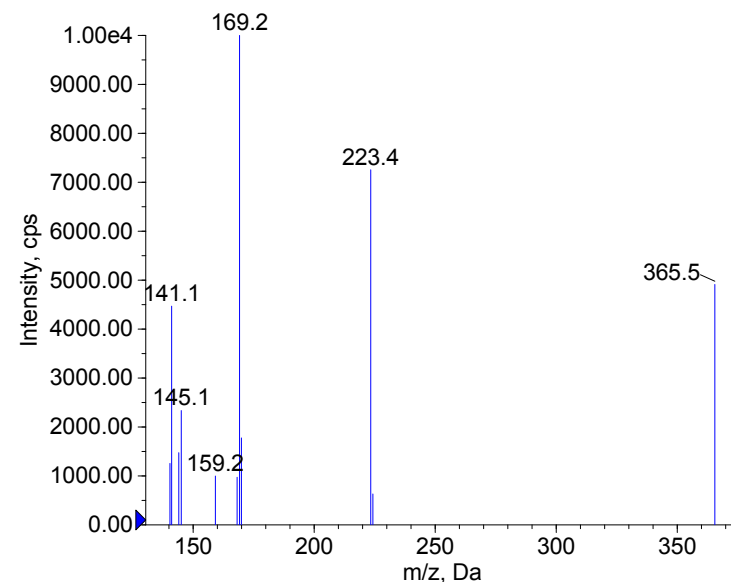


Compound Name: JWH-122-D9  
 Synonyms:  
 Formula: C<sub>25</sub>H<sub>16.2</sub>H<sub>9</sub>NO  
 CAS Number: 1651833-50-9  
 Molecular weight(Da): 364.2501  
 Compound Class: Synthetic Cannabinoids  
 Compound ID:  
 User Value: 0.0000  
 Keyword:  
 Internal Standard: Yes  
 Comment1: 364.250105

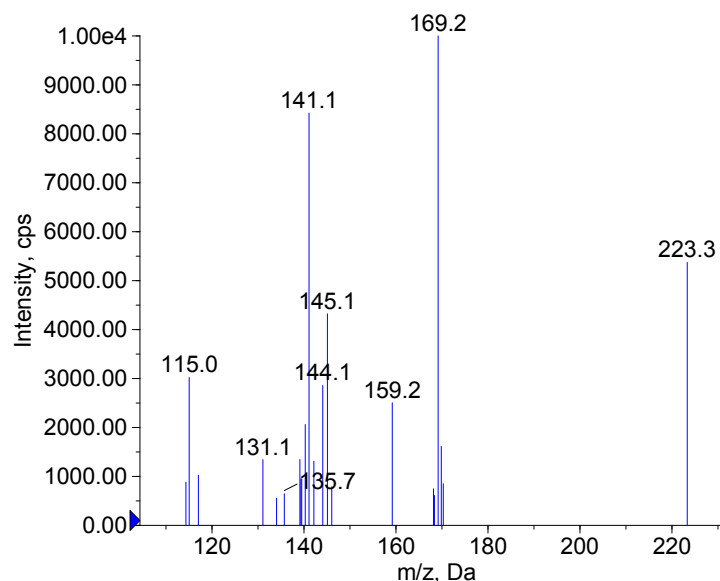
■ + JWH-122-D9 Prec(365.5) CE(20.0) RT(0.4)



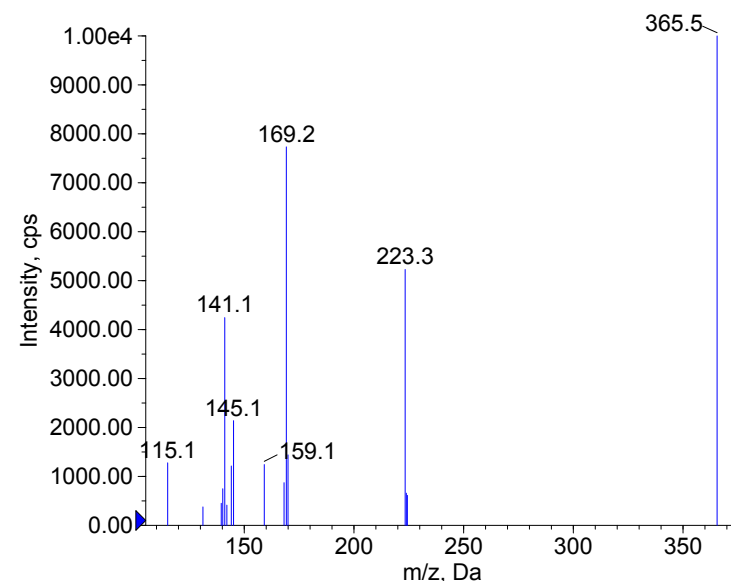
■ + JWH-122-D9 Prec(365.5) CE(35.0) RT(0.4)



■ + JWH-122-D9 Prec(365.5) CE(50.0) RT(0.4)



■ + JWH-122-D9 Prec(365.5) CE(99.0) RT(0.4)



Instrument Model: 4000 Q TRAP  
 Ion Source: Turbo Spray  
 Polarity: Positive  
 Scan Type: EPI  
 1st Precursor m/z: 365.5000  
 Collision Energy1(V): 20.0000  
 Charge State1: 1  
 CAD Gas Type:  
 CAD Gas Value: 6.0000  
 Retention Time(min): 0.40  
 Resolution: unit  
 Comment2:  
 Comment3:

© 2012-2015 University of Bern  
 Lars Ambach, Wolfgang Weinmann  
 www.irm.unibe.ch

Comment1: monoisotopic mass  
 "CE(99.0)": CE spread 35 +/- 15 eV

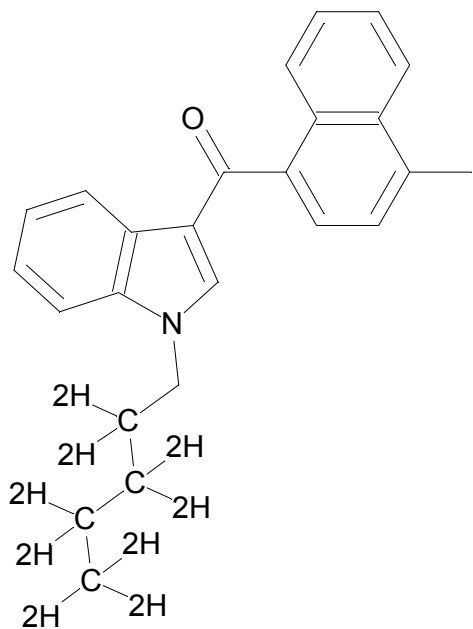
C25H16.2H9NO

Chemist Name:

Project Name:

Workbook Name:

Workbook Page:



© 2012-2015 University of Bern  
Lars Ambach, Wolfgang Weinmann  
[www.irm.unibe.ch](http://www.irm.unibe.ch)

Comment1: monoisotopic mass  
"CE(99.0)": CE spread 35 +/- 15 eV