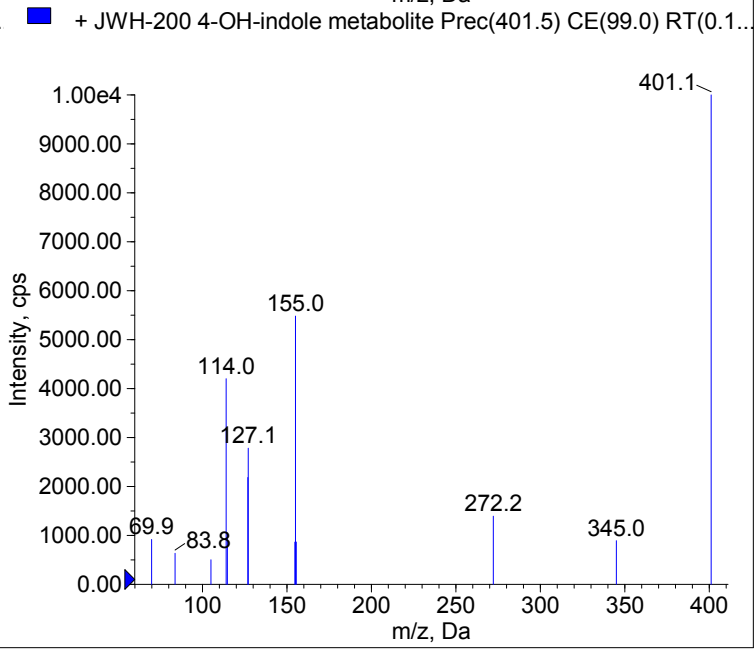
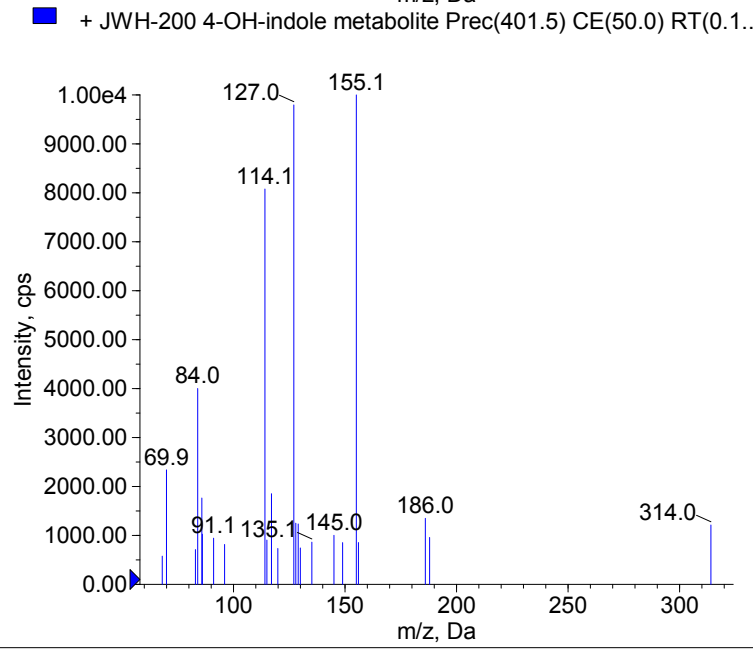
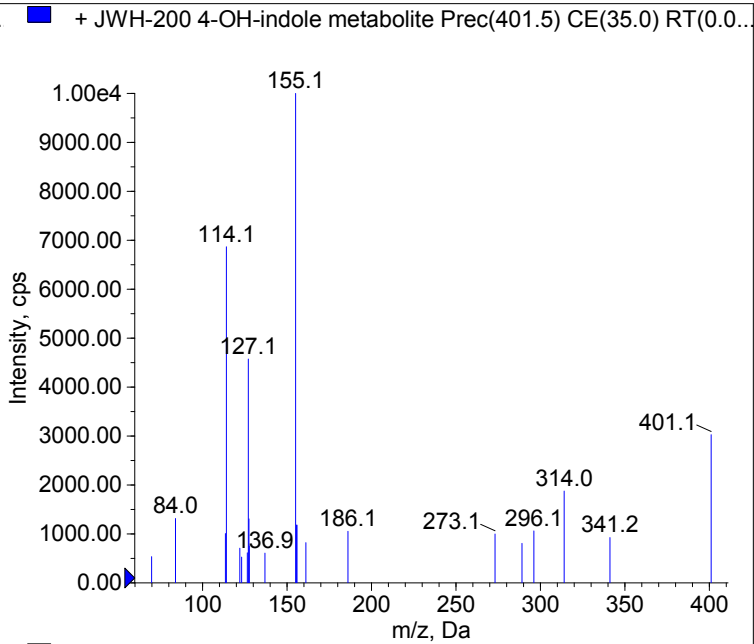
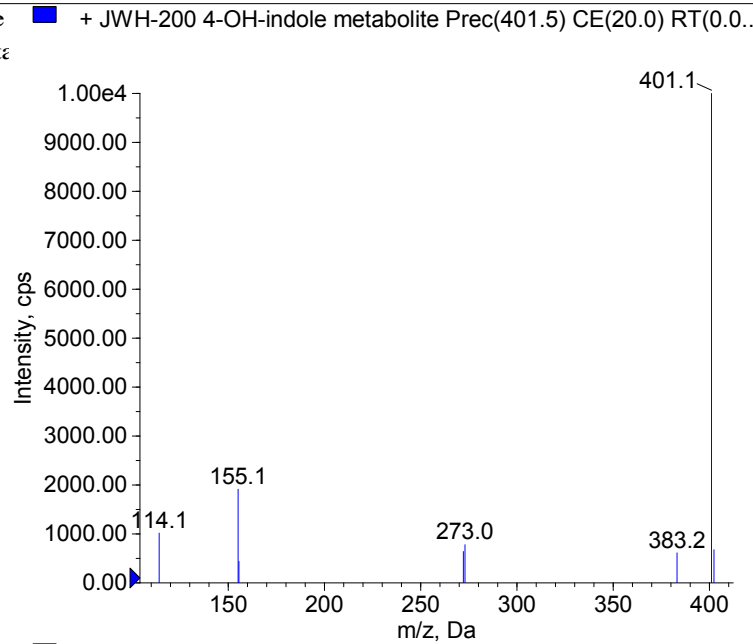


Compound Name: JWH-200 4-OH-indole metabolite
 Synonyms: WIN 55,225 4-hydroxyindole met
 Formula: C₂₅H₂₄N₂O₃
 CAS Number: 1427325-73-2
 Molecular weight(Da): 400.1787
 Compound Class: Synthetic Cannabinoids
 Compound ID:
 User Value: 0.0000
 Keyword:
 Internal Standard: No
 Comment1: 400.178693



Instrument Model: QTRAP 5500
 Ion Source: Turbo Spray
 Polarity: Positive
 Scan Type: EPI
 1st Precursor m/z: 401.5000
 Collision Energy1(V): 20.0000
 Charge State1: 1
 CAD Gas Type:
 CAD Gas Value: Level 4
 Retention Time(min): 0.00
 Resolution: unit
 Comment2:
 Comment3:

© 2012-2015 University of Bern
 Lars Ambach, Wolfgang Weinmann
 www.irm.unibe.ch

Comment1: monoisotopic mass
 "CE(99.0)": CE spread 35 +/- 15 eV

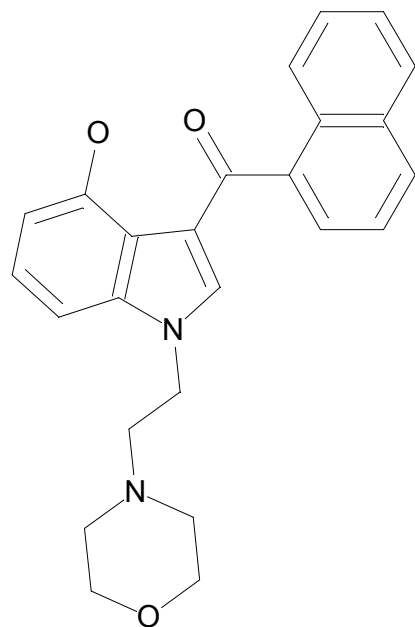
C25H24N2O3

Chemist Name:

Project Name:

Workbook Name:

Workbook Page:



© 2012-2015 University of Bern
Lars Ambach, Wolfgang Weinmann
www.irm.unibe.ch

Comment1: monoisotopic mass
"CE(99.0)": CE spread 35 +/- 15 eV