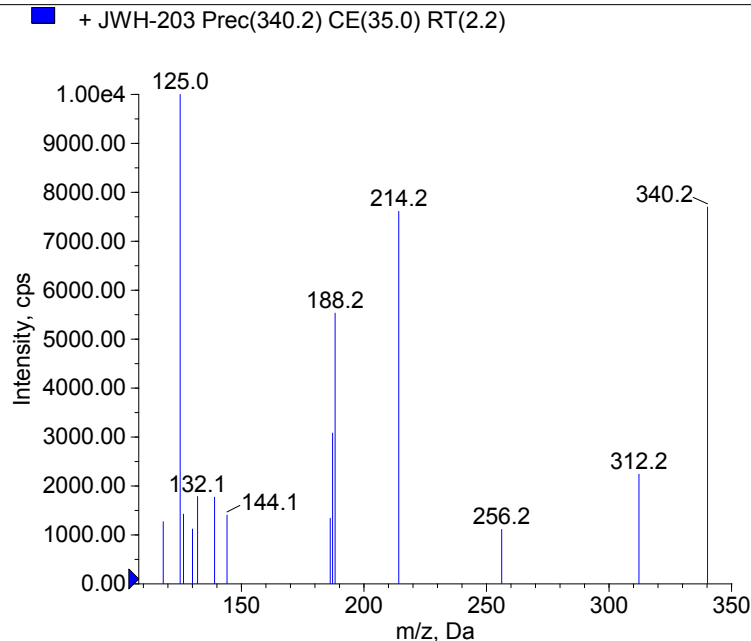
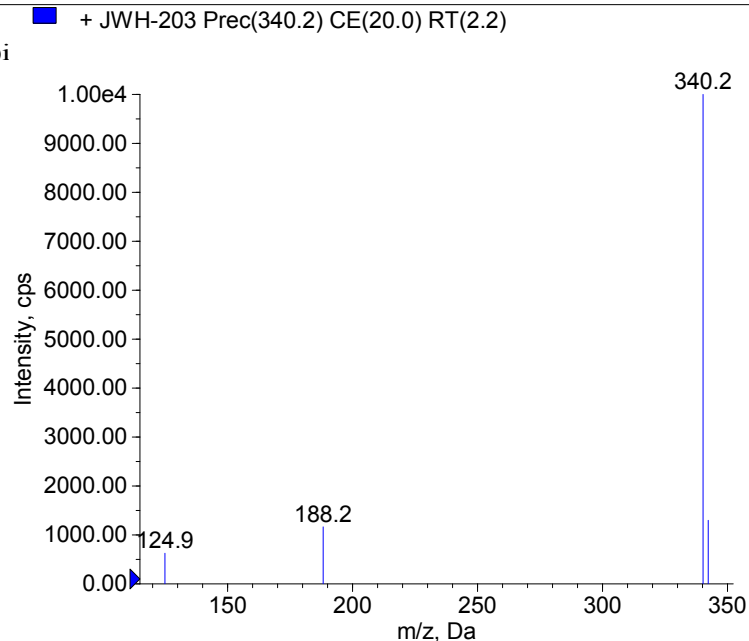
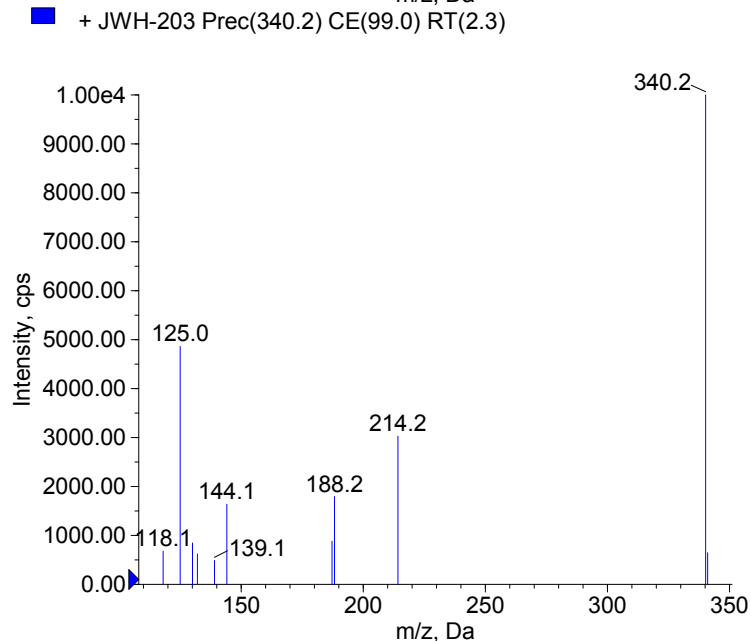
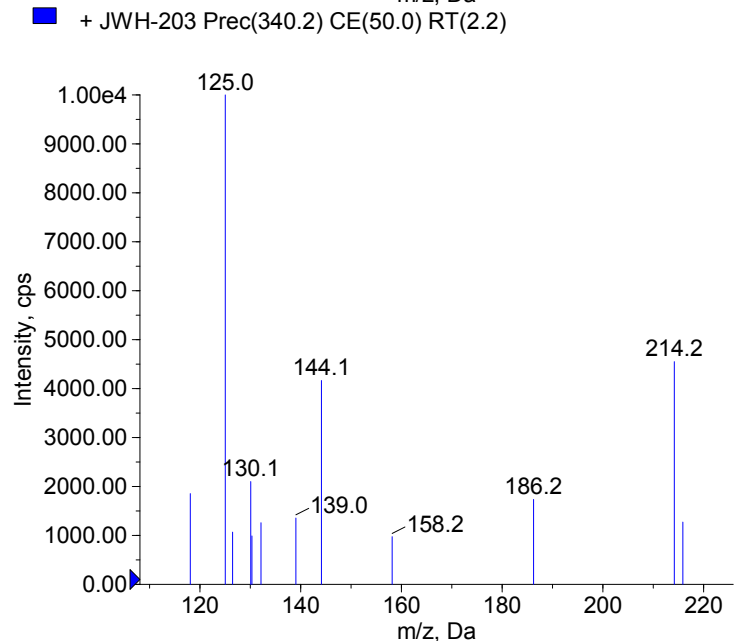


Compound Name: JWH-203
 Synonyms: 1-pentyl-3-(2-chlorophenylacetyl)j
 Formula: C₂₁H₂₂ClNO
 CAS Number: 864445-54-5
 Molecular weight(Da): 339.1390
 Compound Class: Synthetic Cannabinoids
 Compound ID:
 User Value: 0.0000
 Keyword:
 Internal Standard: No
 Comment1: 339.138992



Instrument Model: 3200 Q TRAP
 Ion Source: Turbo Spray
 Polarity: Positive
 Scan Type: EPI
 1st Precursor m/z: 340.2000
 Collision Energy1(V): 20.0000
 Charge State1: 1
 CAD Gas Type:
 CAD Gas Value: Level 4
 Retention Time(min): 2.20
 Resolution: unit
 Comment2:
 Comment3:



© 2012-2015 University of Bern
 Lars Ambach, Wolfgang Weinmann
 www.irm.unibe.ch

Comment1: monoisotopic mass
 "CE(99.0)": CE spread 35 +/- 15 eV

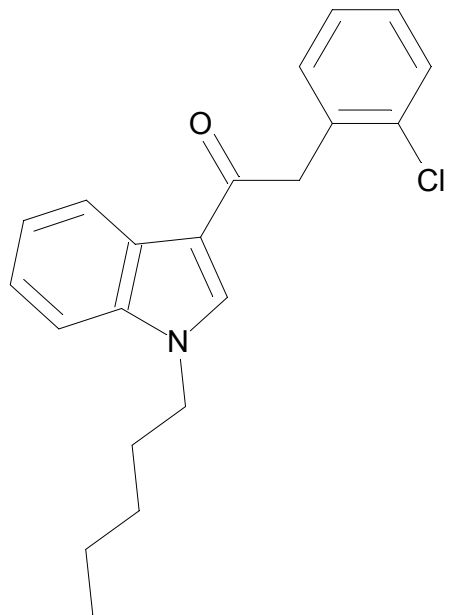
C21H22NOCl

Chemist Name:

Project Name:

Workbook Name:

Workbook Page:



© 2012-2015 University of Bern
Lars Ambach, Wolfgang Weinmann
www.irm.unibe.ch

Comment1: monoisotopic mass
"CE(99.0)": CE spread 35 +/- 15 eV