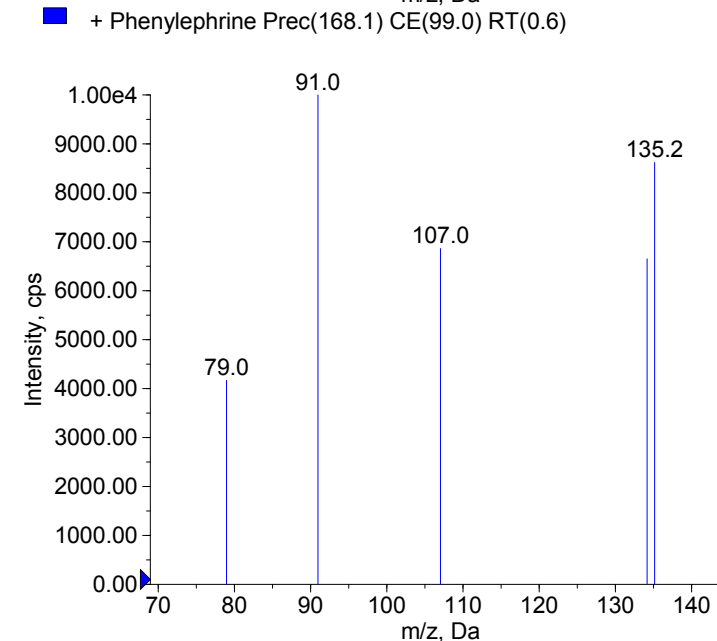
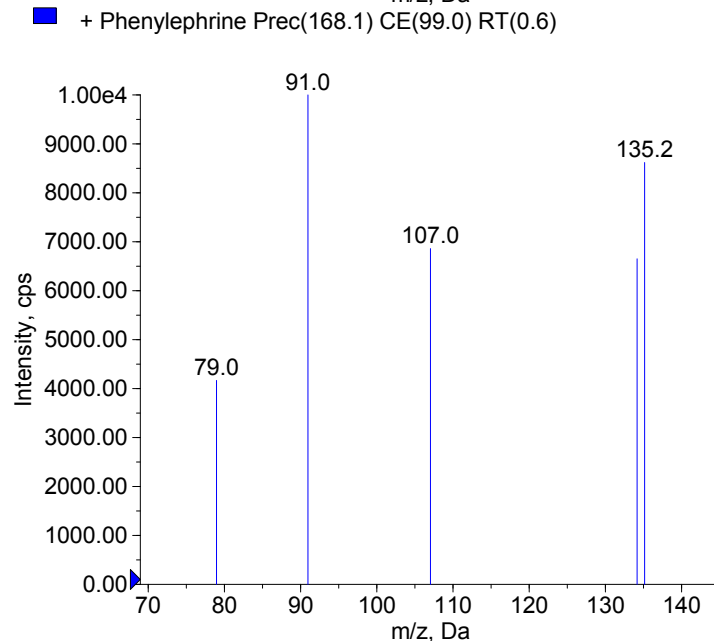
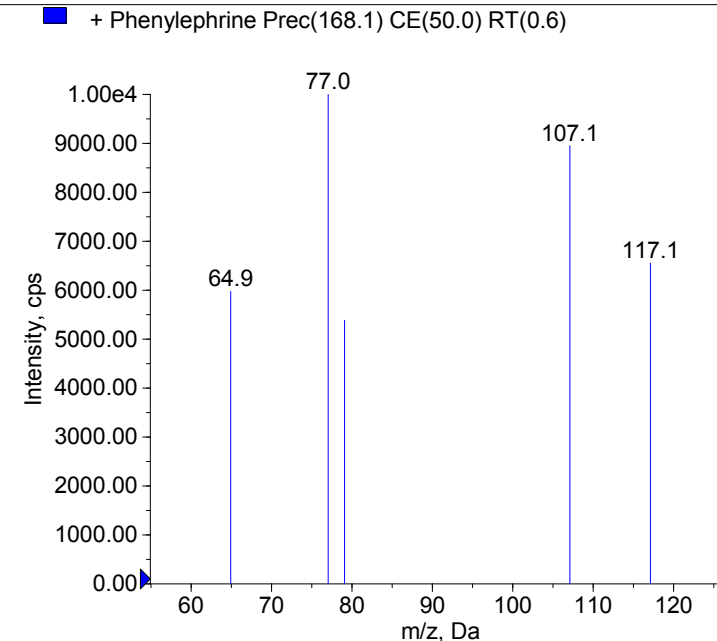
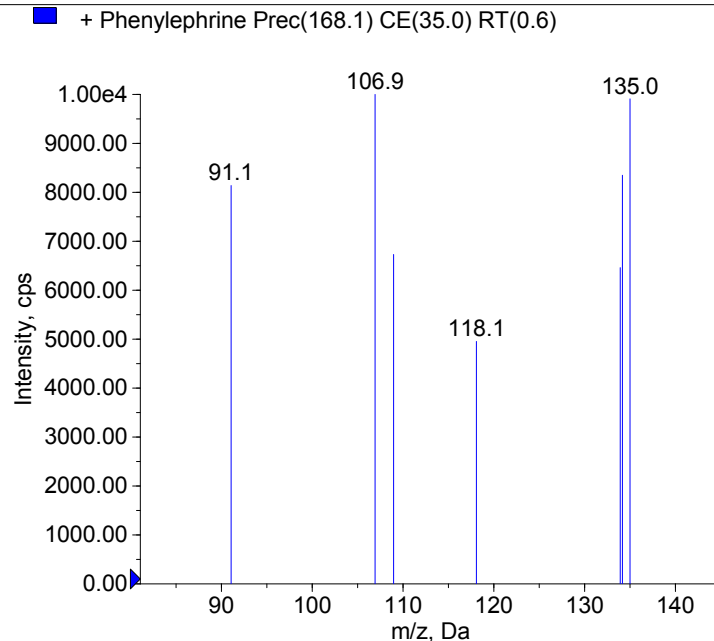


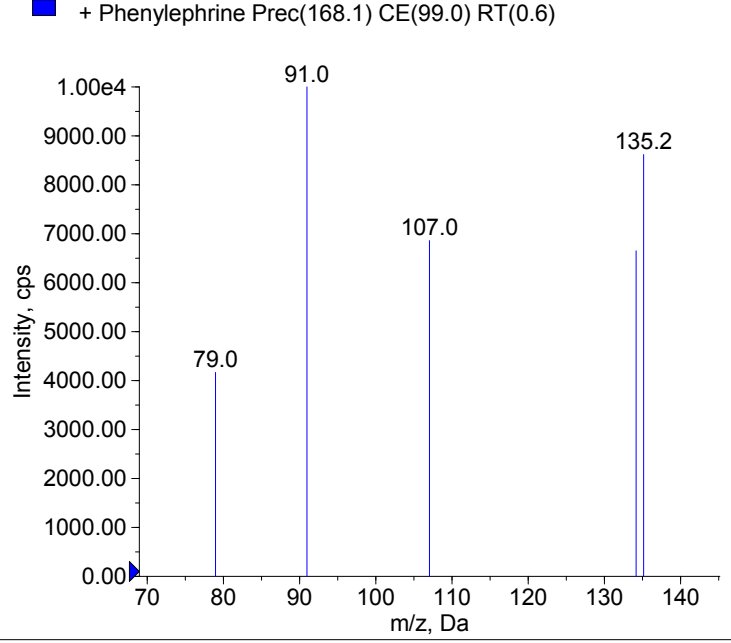
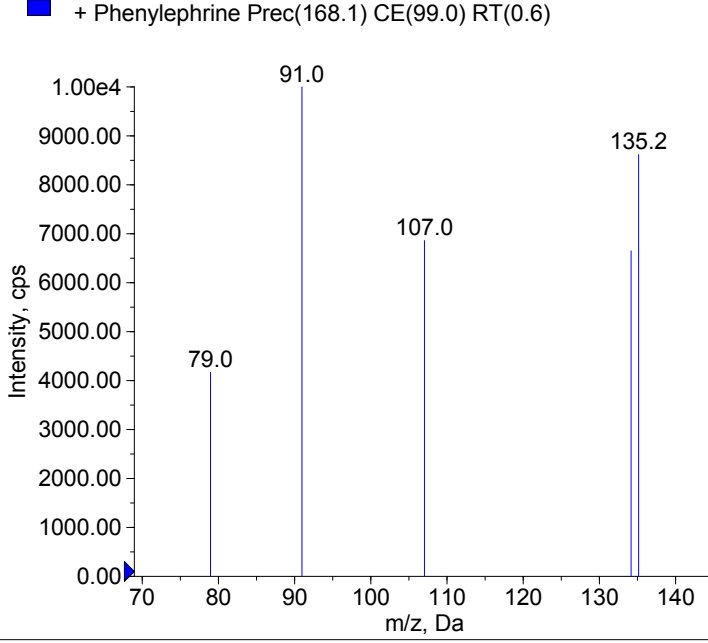
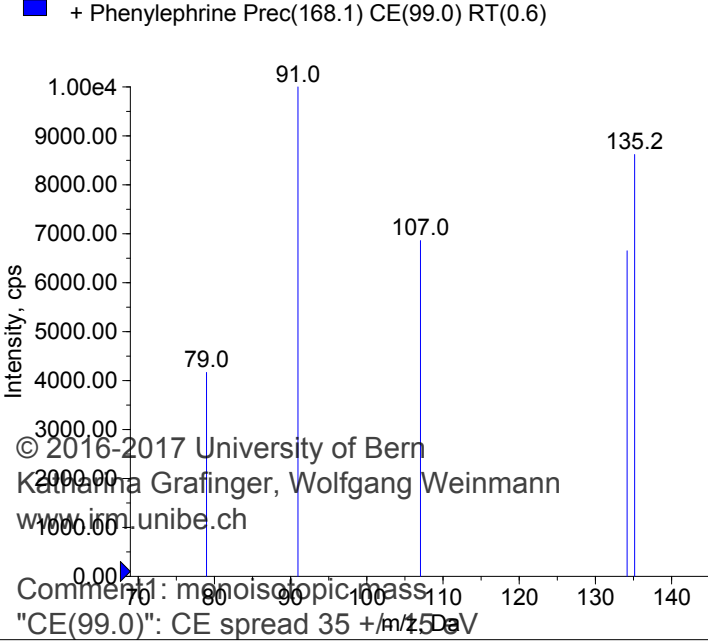
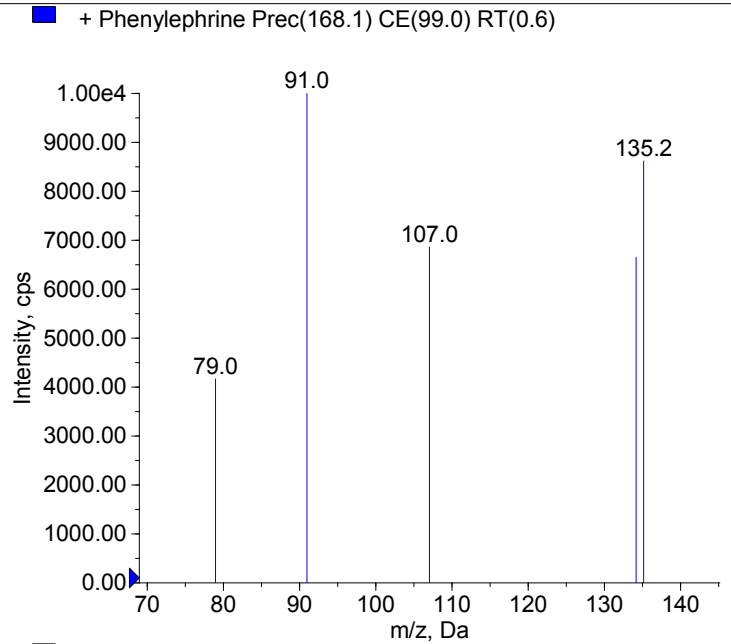
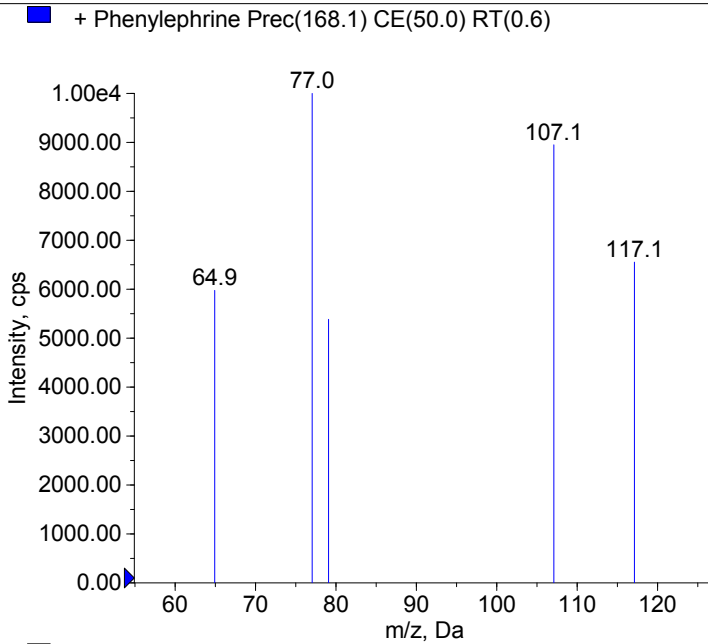
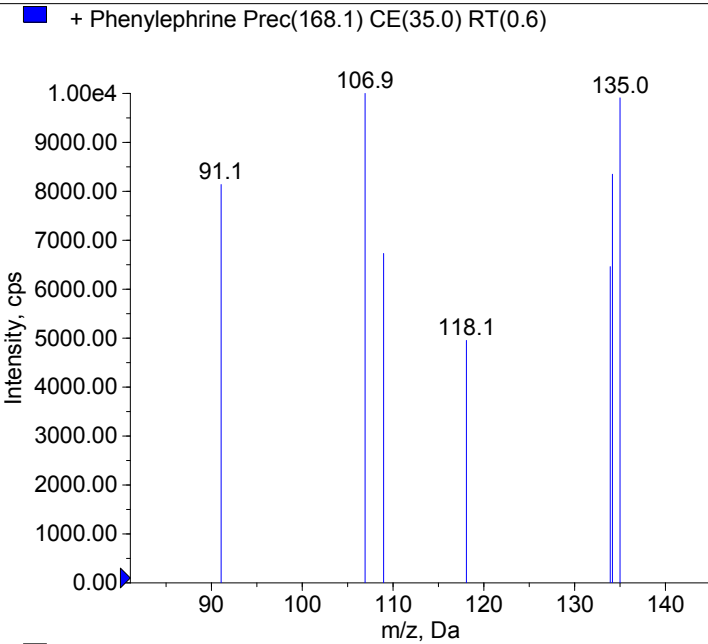
Compound Name: Phenylephrine  
Synonyms:  
Formula: C<sub>9</sub>H<sub>13</sub>NO<sub>2</sub>  
CAS Number: 59-42-7  
Molecular weight(Da):167.0946  
Compound Class: Phenethylamine  
Compound ID:  
User Value: 0.0000  
Keyword:  
Internal Standard: No  
Comment1: 167.094629

Instrument Model: 3200 Q TRAP  
Ion Source: Turbo Spray  
Polarity: Positive  
Scan Type: EPI  
1st Precursor m/z: 168.1000  
Collision Energy1(V): 35.0000  
Charge State1: 1  
CAD Gas Type:  
CAD Gas Value: Level 4  
Retention Time(min): 0.60  
Resolution: unit  
Comment2:  
Comment3:

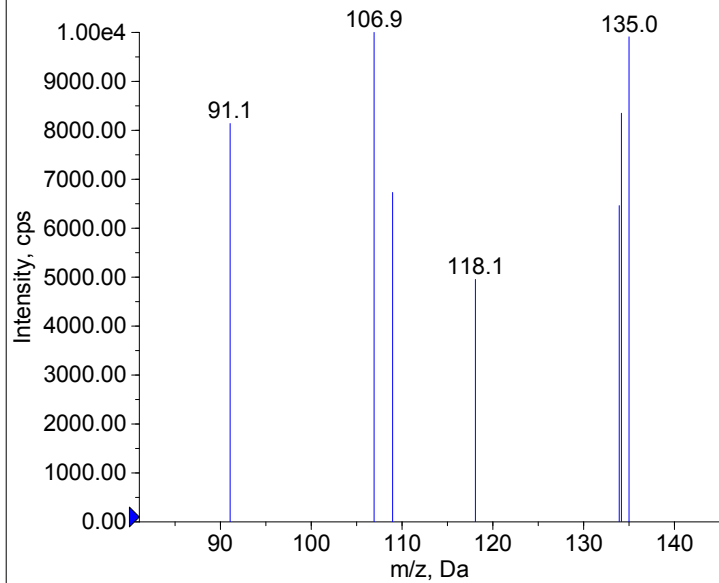
© 2016-2017 University of Bern  
Katharina Grafinger, Wolfgang Weinmann  
www.irm.unibe.ch

Comment1: monoisotopic mass  
"CE(99.0)": CE spread 35 +/- 15 eV





■ + Phenylephrine Prec(168.1) CE(35.0) RT(0.6)



© 2016-2017 University of Bern  
Katharina Grafinger, Wolfgang Weinmann  
www.irm.unibe.ch

Comment1: monoisotopic mass  
"CE(99.0)": CE spread 35 +/- 15 eV

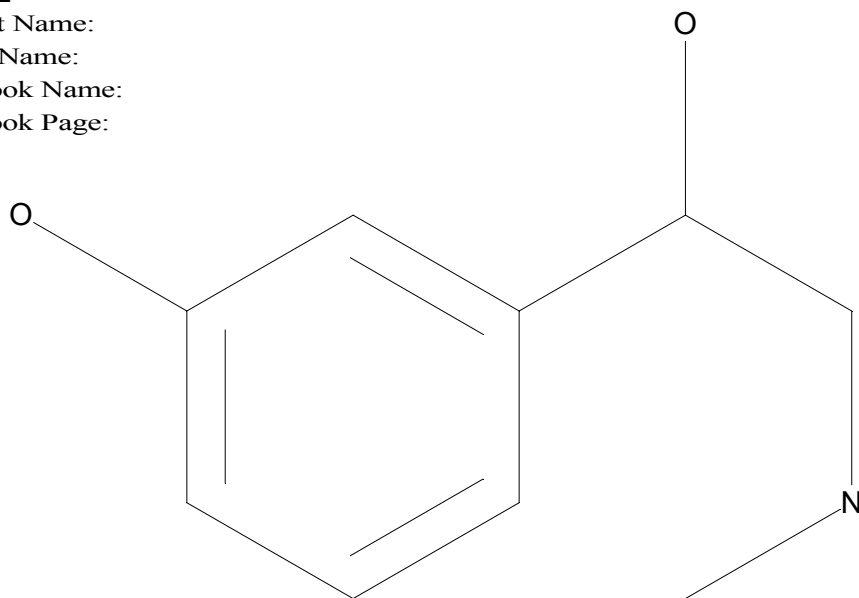
C9H13NO2

Chemist Name:

Project Name:

Workbook Name:

Workbook Page:



© 2016-2017 University of Bern  
Katharina Grafinger, Wolfgang Weinmann  
[www.irm.unibe.ch](http://www.irm.unibe.ch)

Comment1: monoisotopic mass  
"CE(99.0)": CE spread 35 +/- 15 eV